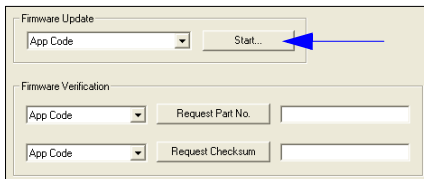




QX-870 Firmware Update Guide

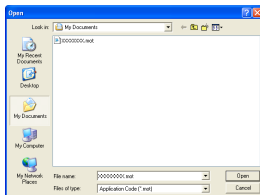
Important: Updating firmware will overwrite the older firmware currently on the scanner. Be sure that you are downloading the correct firmware for your scanner and that the firmware download will not interfere with your application. Contact the Microscan Help Desk at helpdesk@microscan.com for additional assistance with firmware upgrades.

ESP's **Firmware Update** feature is used to download firmware to your scanner. Firmware versions are specific to your scanner. Consult your sales representative before downloading firmware. If necessary, firmware will be sent to you in the form of a *.mot file.



To download firmware:

1. First, be sure that your scanner is connected to the host computer.
2. Apply power to the scanner.
3. In the **Firmware Update** dropdown menu, select **App Code** or **FPGA Code** and click **Start**. This will open a dialog that allows you to browse for the file.



Selecting the appropriate code type (**App** or **FPGA**) from the dropdown menu and clicking **Start** will bring up the dialog shown here. When you find the correct file, select it and click **Open**.

4. Navigate to where the file (a *.mot file) is located on your host computer, and select the file to begin the firmware download.

The download process may take several minutes. During the download, the scanner will be silent, the LEDs will flash intermittently, and a progress indicator at the bottom of the ESP window will let you know when the download is complete.

Important: Do not interrupt power or disconnect the host cable while firmware download is in progress.

The scanner will take approximately one extra minute to boot up the first time after the firmware update completes. Do not disconnect power until you hear three beeps.

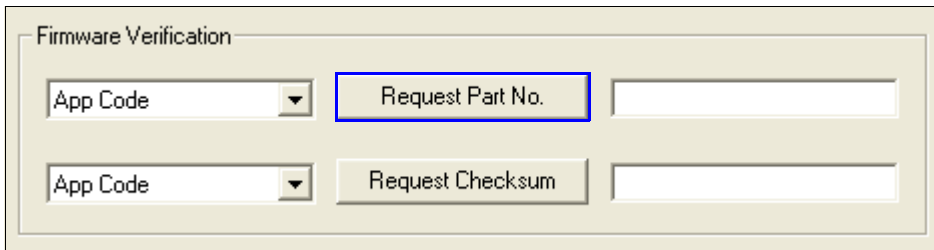
- 1st beep = -19 programming complete
- 2nd beep = Default file generation complete
- 3rd beep = Default unit settings complete

The motor will start again after the third beep.

Firmware Verification

The part number of your scanner's Application Code or FPGA code can be verified using ESP.

1. Click the **Firmware** tab in ESP's **Utilities**.
2. In the **Firmware Verification** section, select **App Code** or **FPGA Code** from the dropdown menu to the left of the **Request Part No.** button.
3. Click the **Request Part No.** button. The part number will appear in the field to the right.



The screenshot shows a 'Firmware Verification' dialog box with a light beige background. It contains two rows of controls. The top row features a dropdown menu labeled 'App Code' with a downward arrow, a button labeled 'Request Part No.' which is highlighted with a blue border, and an empty text input field to its right. The bottom row features another dropdown menu labeled 'App Code' with a downward arrow, a button labeled 'Request Checksum', and another empty text input field to its right.