

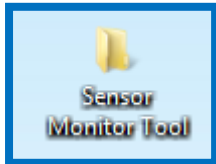
E39-USB1 Monitor tool for E3S-DB Installation Guide

Version 2.0

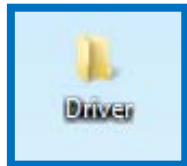
OMRON

1. Installation of Sensor Monitor Tool

You find two folders on CD-ROM:



: Installer for Sensor Monitor Tool

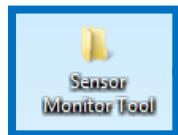


: Driver for E39-USB1

Please copy folders to your PC desktop.

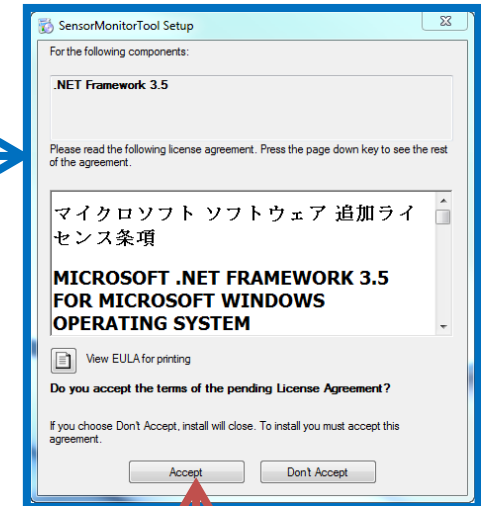
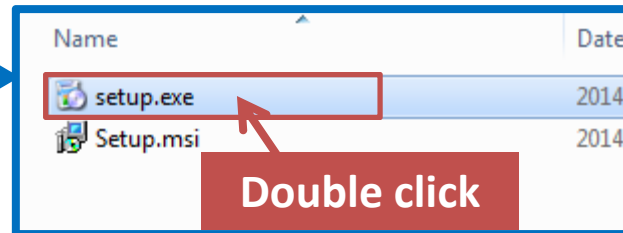
1. Installation of Sensor Monitor Tool

1-1. Open folder

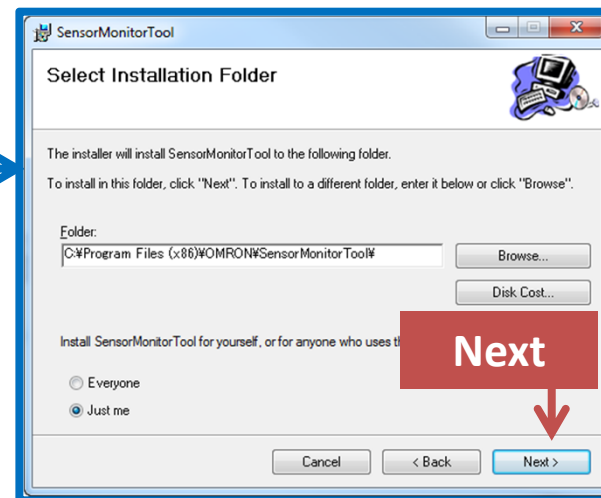
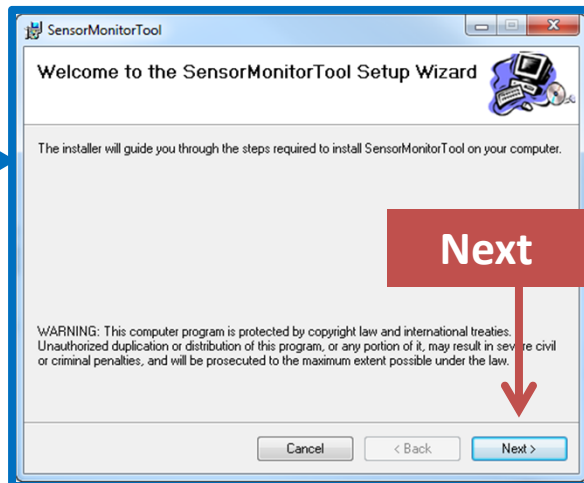


Open

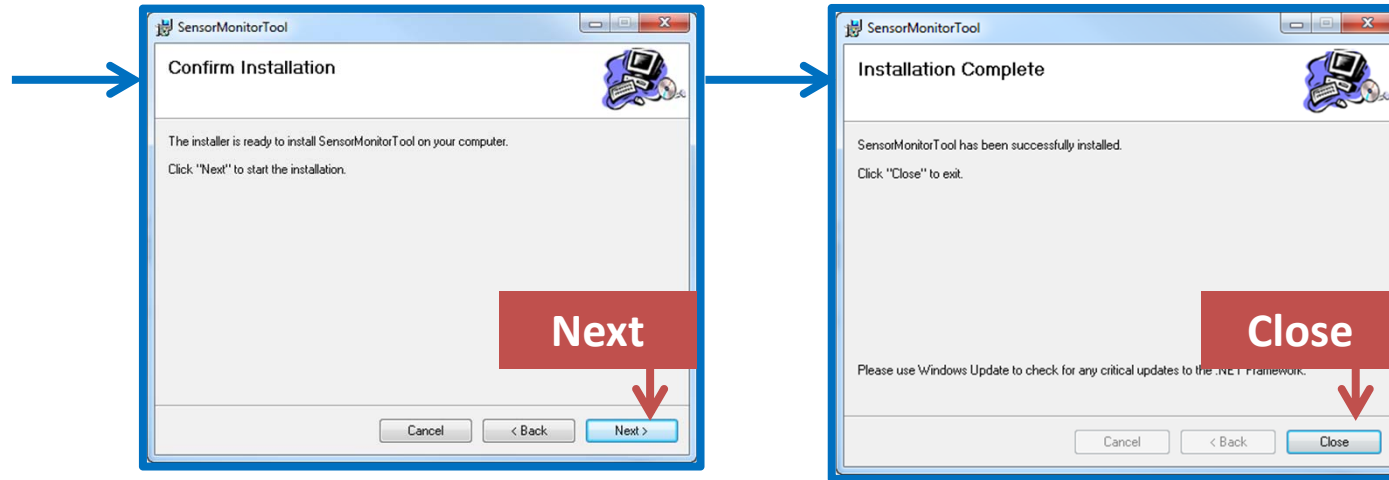
1-2. Execute "setup.exe"



Accept

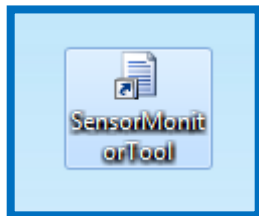


1. Installation of Sensor Monitor Tool



Now installation is completed

1-3. Please confirm you have following icon on your desktop.



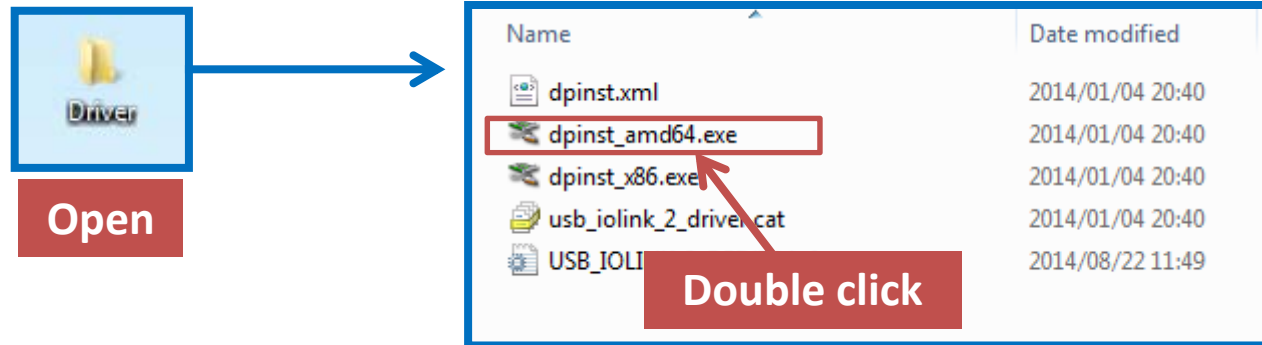
Fin.

2. Installation of driver for E39-USB1

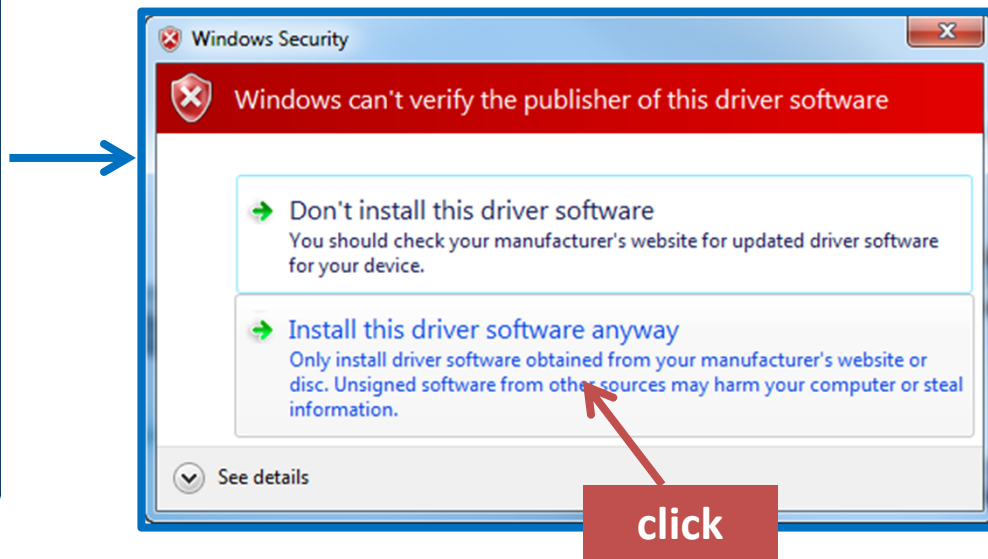
2-1. Open the "Driver" folder and select correct driver:

"dpinst_amd64.exe" for PC operating with 64bit

"dpinst_x86.exe" for PC operating with 32 bit



2-2. Select "Install this driver software anyway".



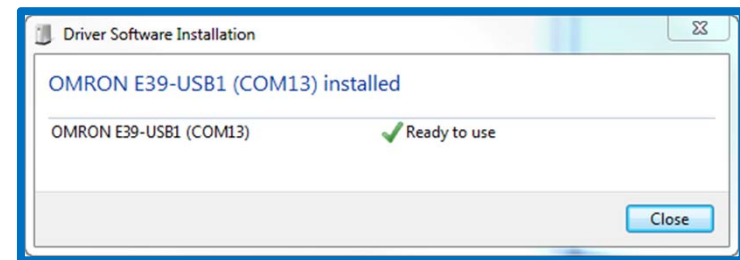
Fin.

3. Setup

3-1. Connect USB cable to PC



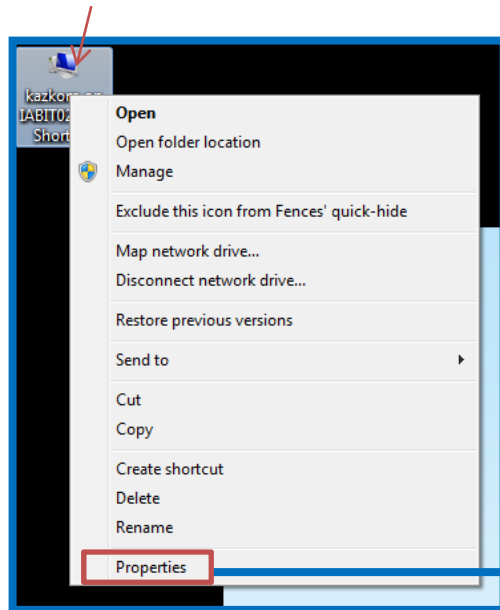
After few seconds, USB driver software is installed automatically



3. Setup

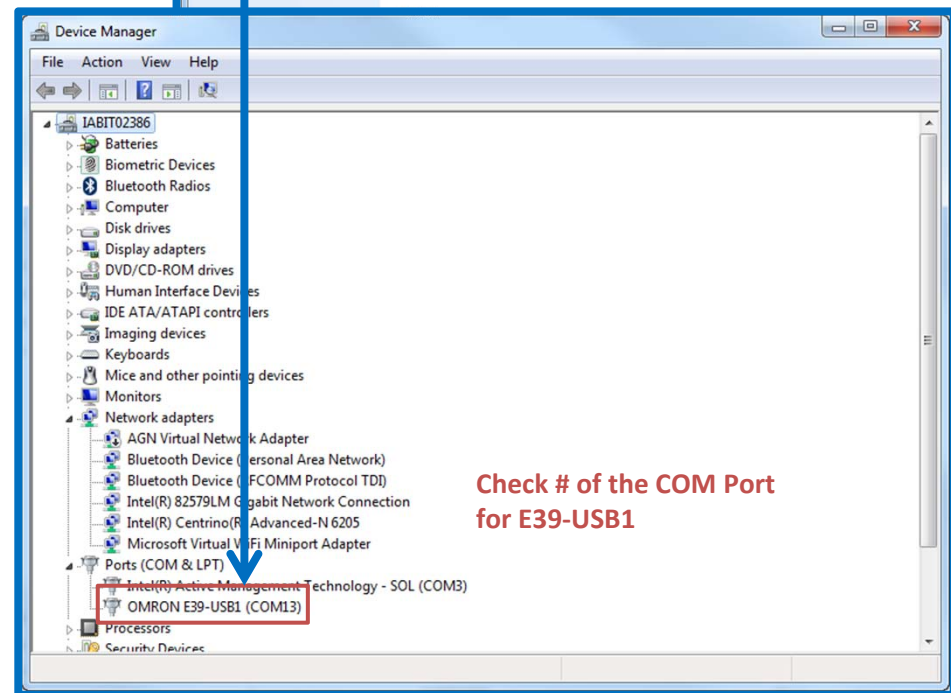
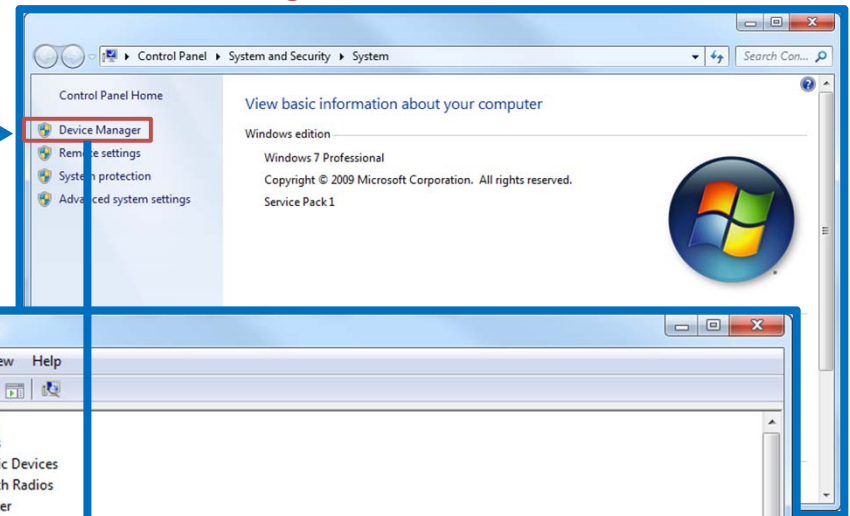
3-2. Confirm COM Port for E39-USB1 in Device Manager

Right-click the icon of your PC on the desktop



Click "Properties"

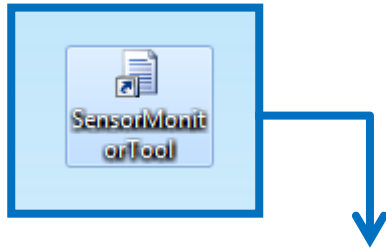
Click "Device Manager"



Check # of the COM Port
for E39-USB1

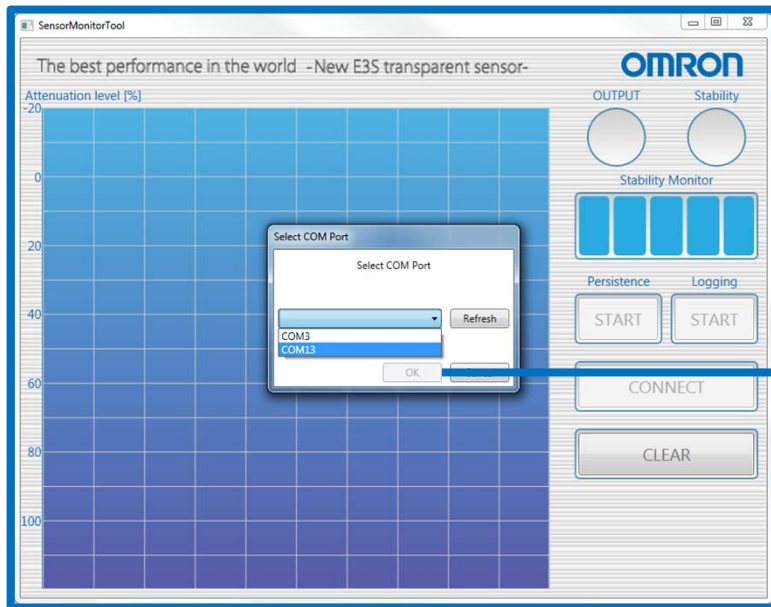
3. Setup

3-3. Launch “Sensor Monitor Tool”.

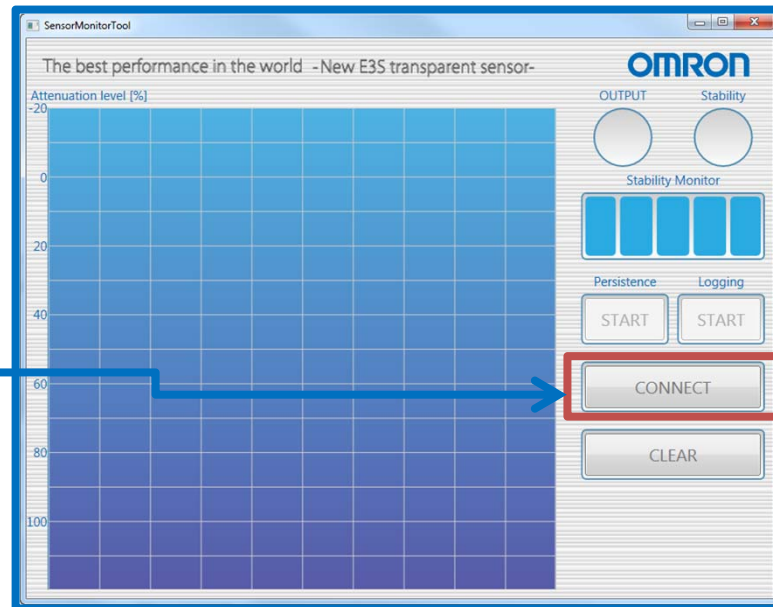


Important !!

When you launch and connect “Sensor Monitor Tool”, sensor must **not** receive light from reflector.
(Please do not place reflector in front of the sensor.)



Select COM Port for E39-USB1

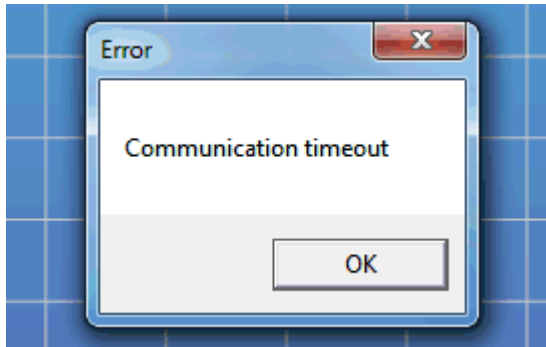


Click “CONNECT”

PC Monitor is now ready to use.

4. Trouble shooting

- If the connection of E3S-DB is not successful this pop-up window appears:



- Possible cause:
 - Sensor was adjusted to reflector during connection of Sensor Monitor tool
 - Exchange of Sensors without re-launching of PC-Monitor
 - Selection of wrong COM port
- Countermeasure:
 1. Disconnect USB-Tool from PC
 2. Verify that USB-Tool is installed correctly (check 32-bit or 64-bit driver)
 3. Verify correct COM port in Device Manager
 4. Start connection procedure again and make sure that sensor is not adjusted to reflector during whole connection procedure

■ EUROPE

OMRON EUROPE B.V. Sensor Business Unit
Carl-Benz Str.4, D-71154 Nufringen Germany
Phone:49-7032-811-0 Fax: 49-7032-811-199

■ NORTH AMERICA

OMRON ELECTRONICS LLC
One Commerce Drive Schaumburg,IL 60173-5302 U.S.A.
Phone:1-847-843-7900 Fax : 1-847-843-7787

■ ASIA-PACIFIC

OMRON ASIA PACIFIC PTE. LTD.
No. 438A Alexandra Road #05-05-08(Lobby 2),
Alexandra Technopark, Singapore 119967
Phone : 65-6835-3011 Fax :65-6835-2711

■ CHINA

OMRON(CHINA) CO., LTD.
Room 2211, Bank of China Tower,
200 Yin Cheng Zhong Road,
PuDong New Area, Shanghai, 200120, China
Phone : 86-21-5037-2222 Fax :86-21-5037-2200

OMRON Corporation