

# Machine development time slashed by 25%

Panel wiring time down 30%

*When the Danish automation company, Pagaard EL, switched to the new Omron Value Design panel products with Push-In Plus technology and the Omron Sysmac automation platform they expected to reduce costs, but in the end, all the expected savings were dramatically exceeded. Moreover, their customer's manpower costs were also slashed by 75%.*

"We knew that switching to the Value Design products and the Sysmac platform would reduce panel wiring and machine development time" says Torben Lund MD of Pagaard. "That's because with the Sysmac platform we only need to build one network for both control and safety. We also worked in one software development environment for configuration, programming, simulation and monitoring. So we did expect to reduce the machine development time. But by 25%? Yes. It's a very significant saving, and it's come at a time when the whole automation industry is looking for ways to improve efficiency."

Torben is equally keen about the new Value Design panel products, which all have the same standardized smaller height and are all thinner than previous models. They are also better matched to each other and are therefore more easily interchanged.



*"We knew that switching to the Value Design products and the Sysmac platform would reduce panel wiring and machine development time" says Torben Lund MD of Pagaard.*

## **75% labour cost savings at customer site**

The machine in question was a new automatic recipe management system for welding wind turbine towers, and the switch to Sysmac not only proved highly beneficial for Torben, but also for his customer. "Our customer now needs only one person to operate four welding systems. Previously each welding system needed its own operator, so now our customer can deploy three of its employees to other tasks," says Torben. "On top of that our customer is also very pleased with the performance of this machine which uses Omron solutions throughout."

## **25% less development time**

"We were especially pleased about the single software development environment. It enabled us to set-up the controller, field devices and networks really quickly while machine and motion programming Function Blocks for motion control really slashed programming time – perhaps by up to 50%"

### 30% less time on wiring the panel

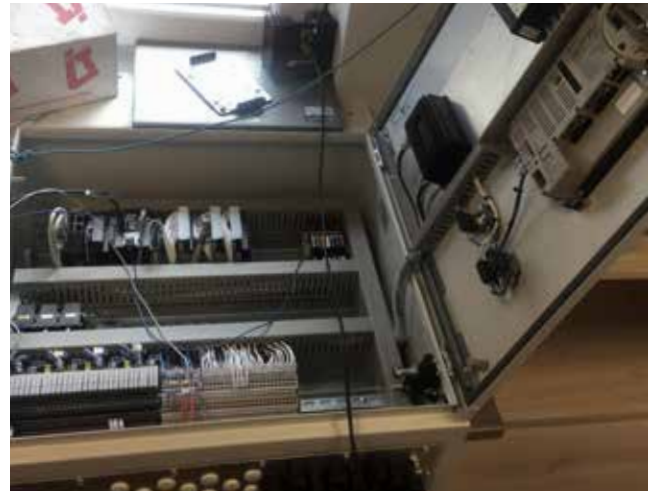
"The new Push-In Plus wiring technology also proved a big success," continues Torben. "Although it's really easy to push the wire in, it's a really strong connection. Also the way the relays and other panel components are designed makes wiring highly convenient – connection is straight from the front. We've used push-in terminals many times over the years, but these are the fastest and most reliable I've come across, and we will most certainly use Push-In Plus products in future developments."

### Side by side mounting

The new, smaller Omron Value Design panel products can also now be mounted side by side due to reduced power consumption. This makes it possible to keep the same panel size but free-up space for the Sysmac Platform.

### Support from Omron

Omron introduced the new Value Design products and Sysmac platform to Pagaard and helped the company adopt the new systems. "We've used Omron products and services for more than 30 years and have great confidence in them, so we were eager to see how we could take advantage of this latest innovation. Omron specialists were always on hand and spent time with our engineers fast-tracking them to the new technology. All in all, it was a smooth and speedy switch, and we plan to use all Omron Value Design products and the Sysmac platform for all future new machine developments."



*The new, smaller Omron Value Design panel products can also now be mounted side by side due to reduced power consumption. This makes it possible to keep the same panel size but free-up space for the Sysmac Platform.*



*"We've used push-in terminals many times over the years, but these are the fastest and most reliable I've come across, and we will most certainly use Push-In Plus products in future developments."*

### About Pagaard EL

Pagaard EL has 16 employees and an annual turnover of €1.5 million. The company provides automation solutions to three main sectors: agricultural machinery manufacturers, building materials manufacturers, and wind turbine towers.