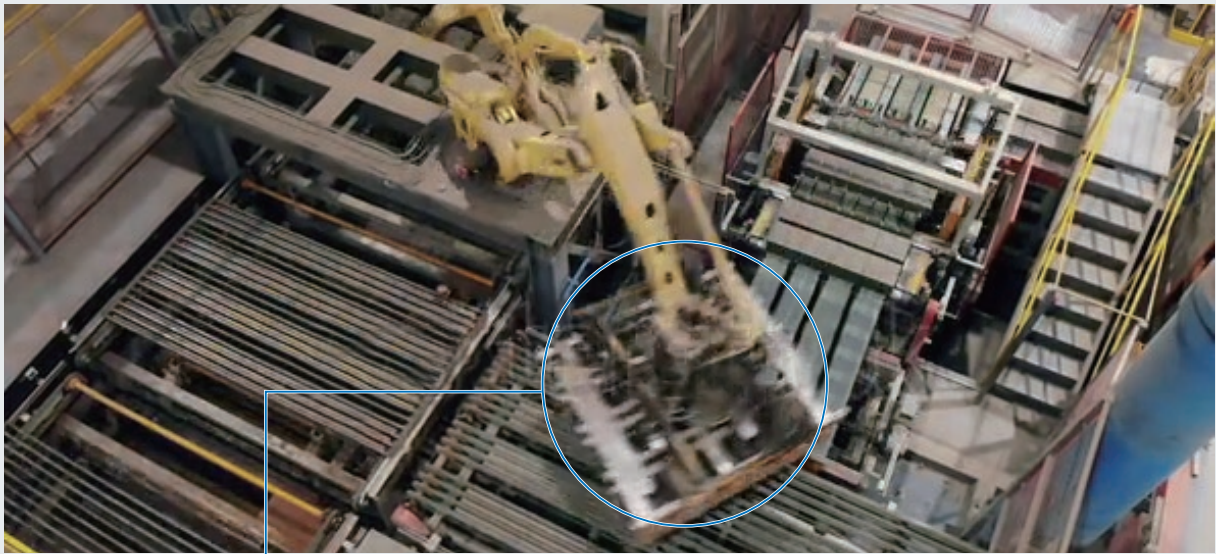


# Record the moment of an event



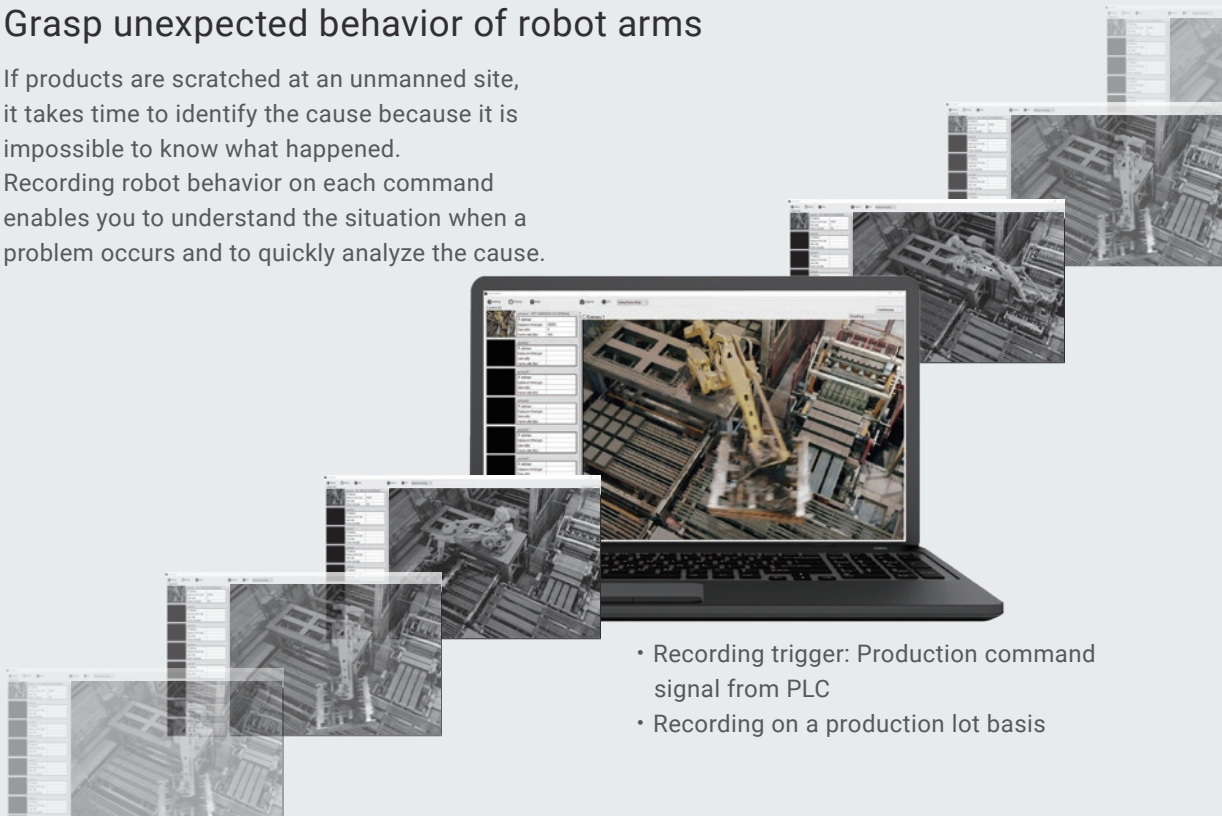
# Efficient identification of problem causes with a video recorder

## Breakage of objects at an unmanned factory operated by robots



### Grasp unexpected behavior of robot arms

If products are scratched at an unmanned site, it takes time to identify the cause because it is impossible to know what happened. Recording robot behavior on each command enables you to understand the situation when a problem occurs and to quickly analyze the cause.



- Recording trigger: Production command signal from PLC
- Recording on a production lot basis

Simple configuration facilitates installation



Industrial camera

Factory Drive Recorder software

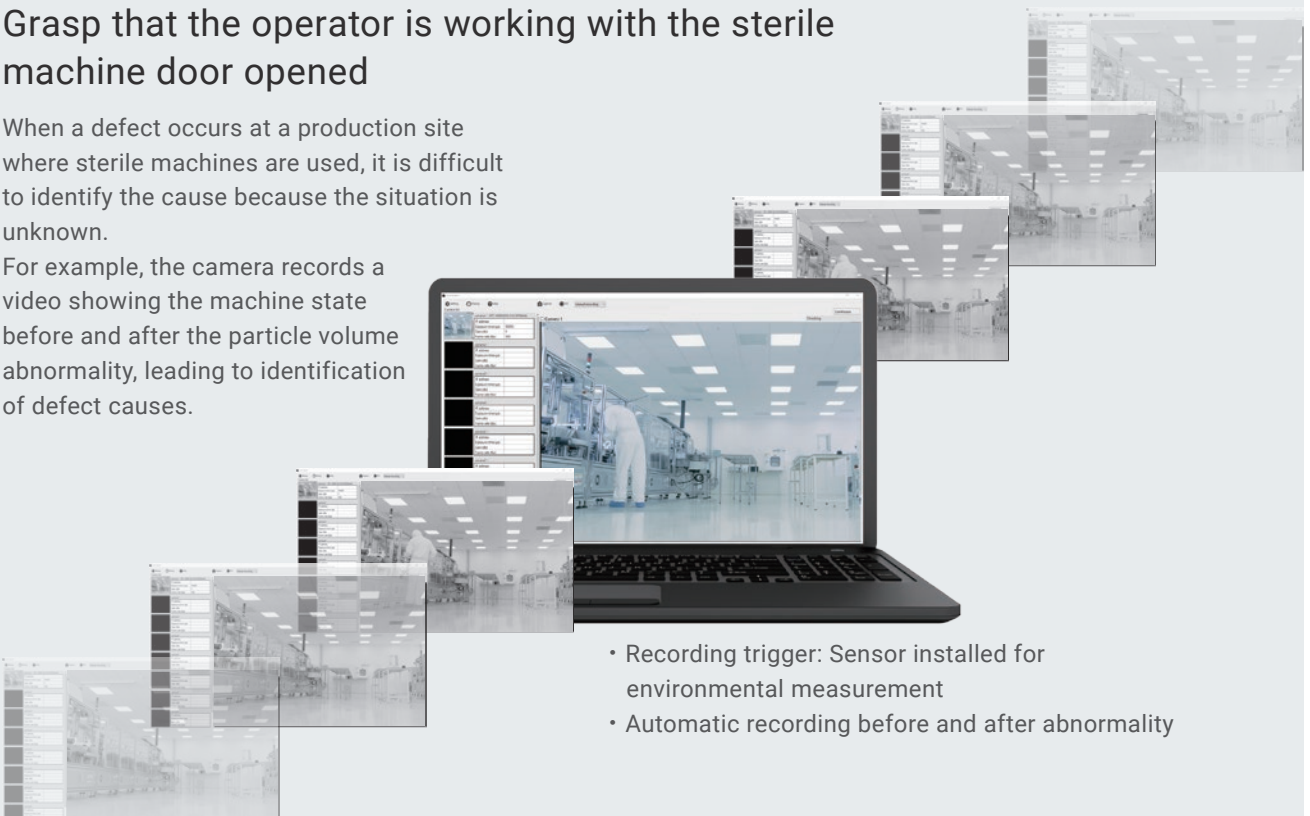
## Quality defects at a production site where the environment is strictly controlled



### Grasp that the operator is working with the sterile machine door opened

When a defect occurs at a production site where sterile machines are used, it is difficult to identify the cause because the situation is unknown.

For example, the camera records a video showing the machine state before and after the particle volume abnormality, leading to identification of defect causes.



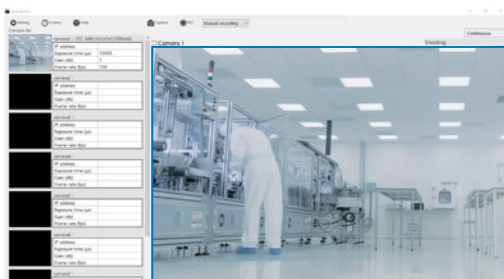
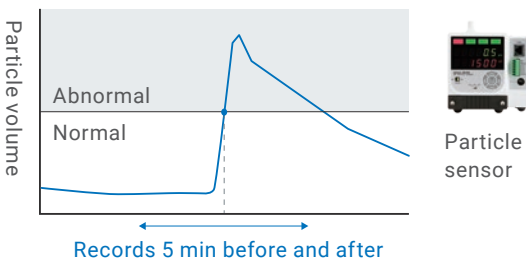
- Recording trigger: Sensor installed for environmental measurement
- Automatic recording before and after abnormality

# Record the moment of state change

## Automatic recording of events by trigger input

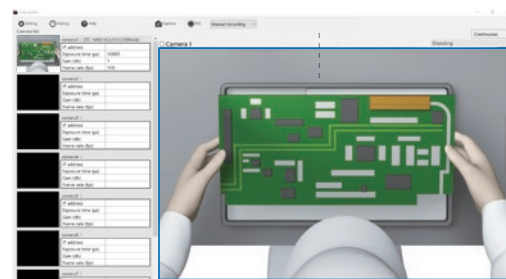
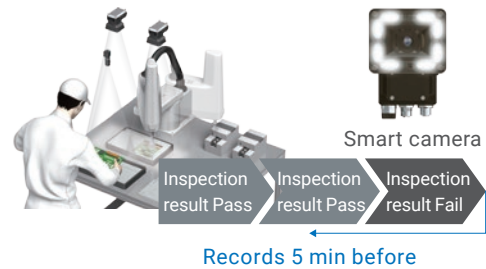
The camera records a video showing the machine state for five minutes before and after the problem by being triggered by external input from the sensor or PLC or by TCP command input. This allows you to quickly understand what happened by replaying the video.

**Case** Recording triggered by particle volume abnormality



Shows that the operator opened the machine door

**Case** Recording of work process triggered by inspection fail



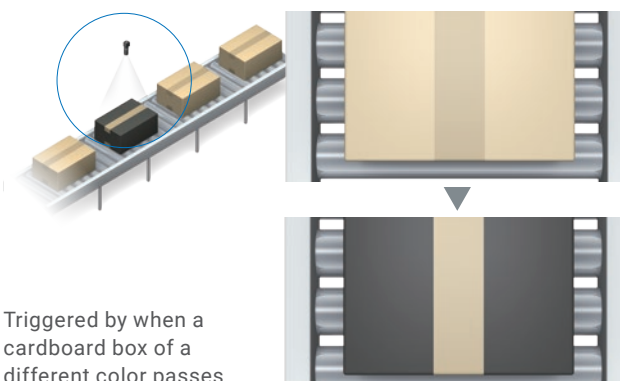
Shows that the operator made a mistake

## Factory-specific recording functions for various applications

This software provides seven types of recording: Trigger Recording that includes Time Trigger, Motion Detection, and Master Image Comparison as well as external trigger input, Continuous Recording that records a video for up to one year, and Manual Recording for 60 minutes. It can be used for continuous remote monitoring of machine status, review of production problems, work process tracing for recall purposes, and many other industrial applications.

### Automatic recording by detecting change in image

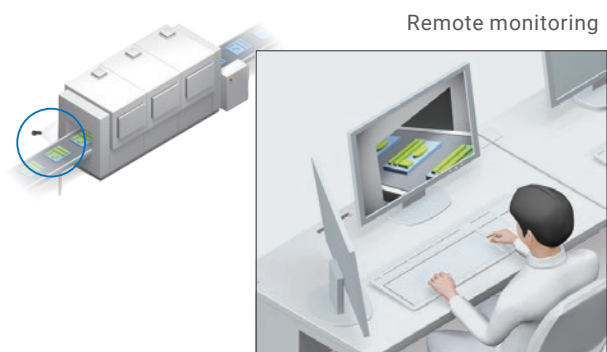
Videos before and after problems can be recoded by Motion Detection that uses the difference from the preceding image under specified conditions (see below), and Master Image Comparison.



Triggered by when a cardboard box of a different color passes

### Remote status monitoring + continuous recording

You can remotely monitor the site status in real time without recording or continuously record for up to one year\*1.



\*1. Recording time varies depending on the storage capacity of your PC or HDD.

# Accurate recording of events with various types of cameras

See details on cameras.



Omron Sentech

Search

<https://sentech.co.jp/en/>

Omron offers a wide selection of more than 100 models of cameras to meet your needs.

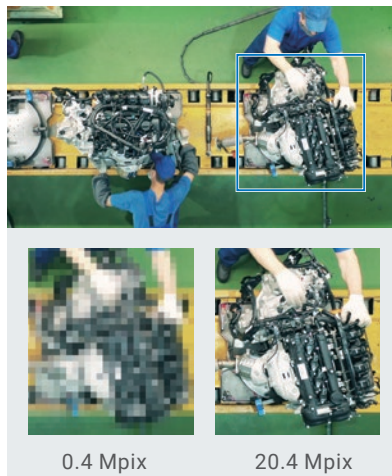
## Fits in narrow spaces

The 19 mm square ultra-compact remote head camera can be installed in narrow spaces.



## Records subtle changes

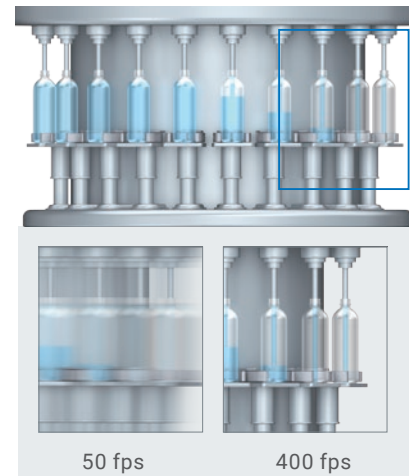
The 20.4 Mpix high-resolution camera can clearly record changes in machine state.



Check for incorrect mounting of fittings

## Records high-speed lines

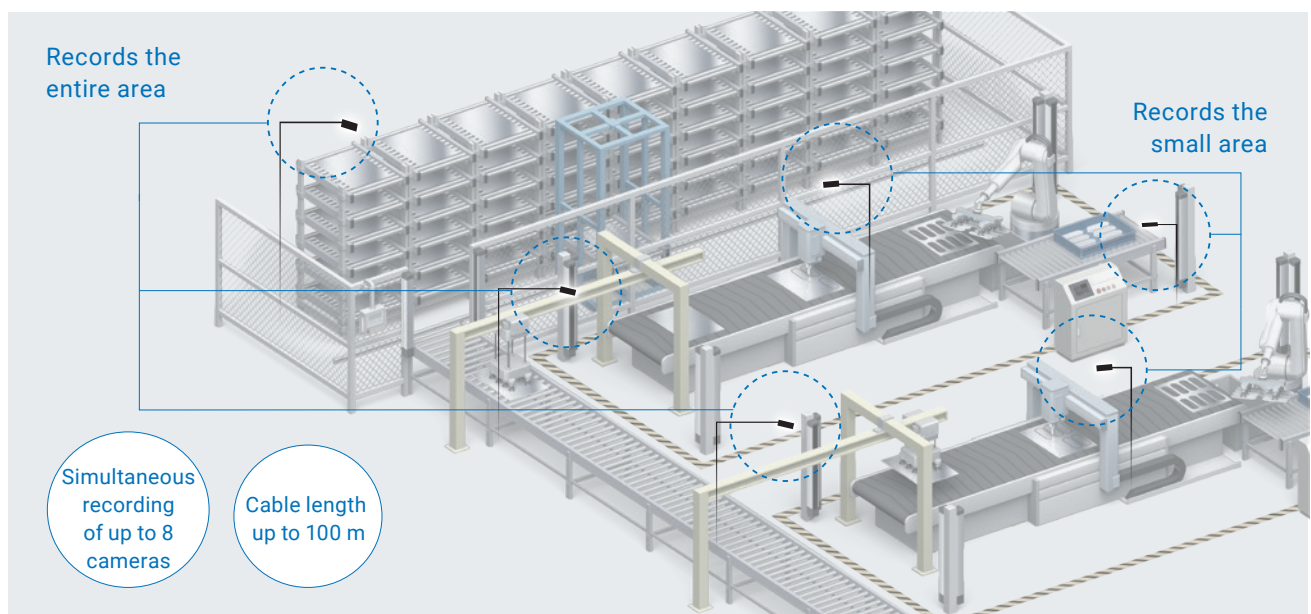
A 0.4 Mpix camera can record high-speed production lines as fast as 400 fps.



Check for insufficient liquid volume due to bottle position deviation

## Simultaneous recording of wide and narrow areas

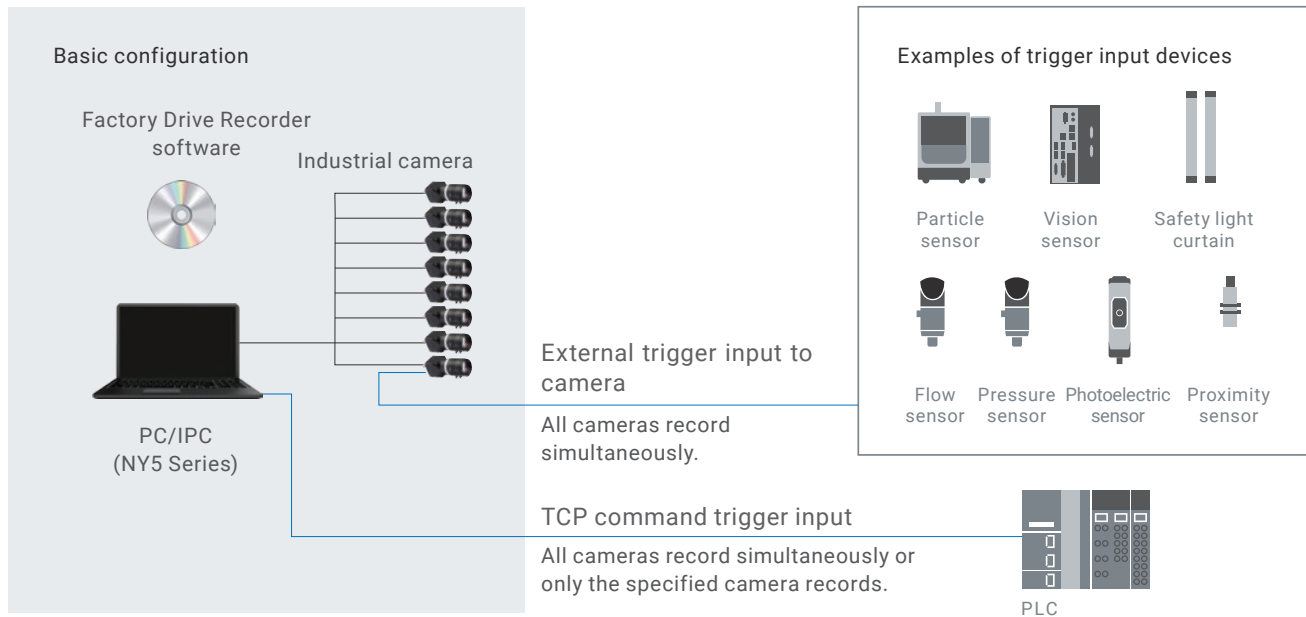
Omron's broad portfolio of cameras, including a camera with a long cable required for wide-area recording to shoot the entire manufacturing site, can be freely combined with lenses for different fields of view. These combinations enable capturing wide and narrow areas at the same time, allowing you to accurately analyze problems by replaying the videos.



# 3-step easy system configuration

## STEP1 Prepare devices

The camera and software bundle is ready for immediate use without the need for verification and programming which are required to build a system by combining general cameras with vision software. Recording can be started immediately by using input from the sensor or PLC installed at the production site as trigger.

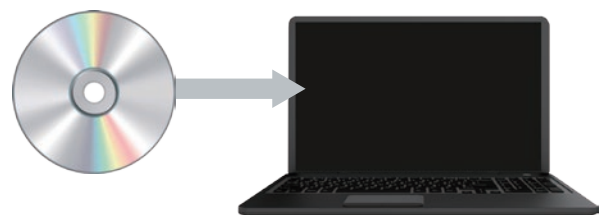


Note: Up to eight cameras can simultaneously record. A hub is required to connect cameras depending on the PC specifications and the number of connected cameras.

## STEP2 Install

Install the Factory Drive Recorder software and camera driver (SentechSDK)\*1 on your PC or IPC.

\*1. Install the latest version of the camera driver (SentechSDK) downloaded from the Omron Sentech's website.



## STEP3 Set recording conditions

Configure camera settings, recording settings, and settings for saving recorded videos.



# Ordering Information

## Software

Item	Max. no. of connectable cameras	Model
Factory Drive Recorder	8 per PC	STC-FDR-SW01

## Cameras

Item		Max. resolution	High-speed*1	Ultra-compact	Cable extension (100 m)	Model
GigE Vision Camera	STC-M Series	20.4 Mpix			✓	Refer to the <i>Industrial Camera Catalog</i> (Cat. No. Q259).
USB3 Vision Camera	STC-M Series	20.4 Mpix	✓			
USB3 Vision Camera Compact Remote Head Model	STC-R Series	1.6 Mpix	✓	✓		

\*1. The maximum frame rate depends on your PC performance, the number of connected cameras, and the camera type. Test the products before actual use.

# Ratings and Specifications

## Specifications

Item	Description	
Components	Installation CD (Factory Drive Recorder installer, SentechSDK installer, manual), license ID	
System requirements	CPU	Core-i5 2 GHz or faster (Core-i7 3 GHz or faster recommended)
	RAM	8 GB min. (16 GB min. recommended)
	Storage	At least 1 GB of available space is required for installation. Allocate sufficient space to save recorded images.
	OS	Windows 10 (64-bit)
Video	Frame rate	Depends on the number of connected cameras, image resolution, and performance of the PC
	Save format	AVI format (MotionJPEG)

## Functions

Item	Function	Description
Display	Live Display	Displays a live image from the connected camera
	Video Display	Displays recorded video
Recording	Continuous Recording	Records as configured (days and time)
	Manual Recording	Starts and stops recording manually
	Trigger Recording	Records when triggered
Recording setting	Camera Settings	Exposure time, gain, frame rate
	Trigger Settings	Time Trigger, Motion Detection, Master Image Comparison, Trigger Signal (external input to camera, TCP command input)
	Save Settings	Save folder, file name
	Language Setting	English or Japanese
I/O setting	External Input	External trigger input to camera, TCP command (trigger input)
	External Output	Message output via TCP (start and stop recording)
History	Display Recording History	Shows a list of latest 100 recorded files
	Export History File	Exports recording history and recorded files in HTML format

## Recording methods

Recording method	Description	Recording time
Continuous Recording	Records as configured (days and time)	Up to 1 year (366 days)
Manual Recording	Starts and stops recording manually	Up to 60 minutes
Trigger Recording	Time Trigger	Records once a day at specified time
	Motion Detection	Records when the difference between an image and the preceding image exceeds the specified value
	Master Image Comparison	Records when the difference between a predefined still image and a camera image exceeds the specified value
	Trigger Signal (External trigger, I/O)	Records when a trigger signal is input to the camera
	Trigger Signal (TCP command)	Records when a TCP command is input to the camera

## Related Products



### Status Sensing Solution

The catalog introduces case examples and products to improve quality through digitization of equipment status (Cat. No. E603)

- Windows is a registered trademark of Microsoft Corporation in the USA and other countries.
- Microsoft product screen shot(s) reprinted with permission from Microsoft Corporation.
- The product photographs and figures that are used in this catalog may vary somewhat from the actual products.
- GigE Vision and USB3 Vision are trademarks of AIA (Automated Imaging Association).
- Images used under license from Shutterstock.com.
- Other company names and product names in this document are the trademarks or registered trademarks of their respective companies.

# Terms and Conditions Agreement

## **Read and understand this catalog.**

Please read and understand this catalog before purchasing the products. Please consult your OMRON representative if you have any questions or comments.

## **Warranties.**

- (a) Exclusive Warranty. Omron's exclusive warranty is that the Products will be free from defects in materials and workmanship for a period of twelve months from the date of sale by Omron (or such other period expressed in writing by Omron). Omron disclaims all other warranties, express or implied.
- (b) Limitations. OMRON MAKES NO WARRANTY OR REPRESENTATION, EXPRESS OR IMPLIED, ABOUT NON-INFRINGEMENT, MERCHANTABILITY OR FITNESS FOR A PARTICULAR PURPOSE OF THE PRODUCTS. BUYER ACKNOWLEDGES THAT IT ALONE HAS DETERMINED THAT THE PRODUCTS WILL SUITABLY MEET THE REQUIREMENTS OF THEIR INTENDED USE.

Omron further disclaims all warranties and responsibility of any type for claims or expenses based on infringement by the Products or otherwise of any intellectual property right. (c) Buyer Remedy. Omron's sole obligation hereunder shall be, at Omron's election, to (i) replace (in the form originally shipped with Buyer responsible for labor charges for removal or replacement thereof) the non-complying Product, (ii) repair the non-complying Product, or (iii) repay or credit Buyer an amount equal to the purchase price of the non-complying Product; provided that in no event shall Omron be responsible for warranty, repair, indemnity or any other claims or expenses regarding the Products unless Omron's analysis confirms that the Products were properly handled, stored, installed and maintained and not subject to contamination, abuse, misuse or inappropriate modification. Return of any Products by Buyer must be approved in writing by Omron before shipment. Omron Companies shall not be liable for the suitability or unsuitability or the results from the use of Products in combination with any electrical or electronic components, circuits, system assemblies or any other materials or substances or environments. Any advice, recommendations or information given orally or in writing, are not to be construed as an amendment or addition to the above warranty.

See <http://www.omron.com/global/> or contact your Omron representative for published information.

## **Limitation on Liability; Etc.**

OMRON COMPANIES SHALL NOT BE LIABLE FOR SPECIAL, INDIRECT, INCIDENTAL, OR CONSEQUENTIAL DAMAGES, LOSS OF PROFITS OR PRODUCTION OR COMMERCIAL LOSS IN ANY WAY CONNECTED WITH THE PRODUCTS, WHETHER SUCH CLAIM IS BASED IN CONTRACT, WARRANTY, NEGLIGENCE OR STRICT LIABILITY.

Further, in no event shall liability of Omron Companies exceed the individual price of the Product on which liability is asserted.

## **Suitability of Use.**

Omron Companies shall not be responsible for conformity with any standards, codes or regulations which apply to the combination of the Product in the Buyer's application or use of the Product. At Buyer's request, Omron will provide applicable third party certification documents identifying ratings and limitations of use which apply to the Product. This information by itself is not sufficient for a complete determination of the suitability of the Product in combination with the end product, machine, system, or other application or use. Buyer shall be solely responsible for determining appropriateness of the particular Product with respect to Buyer's application, product or system. Buyer shall take application responsibility in all cases.

NEVER USE THE PRODUCT FOR AN APPLICATION INVOLVING SERIOUS RISK TO LIFE OR PROPERTY OR IN LARGE QUANTITIES WITHOUT ENSURING THAT THE SYSTEM AS A WHOLE HAS BEEN DESIGNED TO ADDRESS THE RISKS, AND THAT THE OMRON PRODUCT(S) IS PROPERLY RATED AND INSTALLED FOR THE INTENDED USE WITHIN THE OVERALL EQUIPMENT OR SYSTEM.

## **Programmable Products.**

Omron Companies shall not be responsible for the user's programming of a programmable Product, or any consequence thereof.

## **Performance Data.**

Data presented in Omron Company websites, catalogs and other materials is provided as a guide for the user in determining suitability and does not constitute a warranty. It may represent the result of Omron's test conditions, and the user must correlate it to actual application requirements. Actual performance is subject to the Omron's Warranty and Limitations of Liability.

## **Change in Specifications.**

Product specifications and accessories may be changed at any time based on improvements and other reasons. It is our practice to change part numbers when published ratings or features are changed, or when significant construction changes are made. However, some specifications of the Product may be changed without any notice. When in doubt, special part numbers may be assigned to fix or establish key specifications for your application. Please consult with your Omron's representative at any time to confirm actual specifications of purchased Product.

## **Errors and Omissions.**

Information presented by Omron Companies has been checked and is believed to be accurate; however, no responsibility is assumed for clerical, typographical or proofreading errors or omissions.



**Note: Do not use this document to operate the Unit.**

**OMRON Corporation Industrial Automation Company**  
Kyoto, JAPAN

**Contact: [www.ia.omron.com](http://www.ia.omron.com)**

**Regional Headquarters**

**OMRON EUROPE B.V.**

Wegalaan 67-69, 2132 JD Hoofddorp  
The Netherlands  
Tel: (31)2356-81-300/Fax: (31)2356-81-388

**OMRON ELECTRONICS LLC**

2895 Greenspoint Parkway, Suite 200  
Hoffman Estates, IL 60169 U.S.A.  
Tel: (1) 847-843-7900/Fax: (1) 847-843-7787

**OMRON ASIA PACIFIC PTE. LTD.**

No. 438A Alexandra Road # 05-05/08 (Lobby 2),  
Alexandra Technopark,  
Singapore 119967  
Tel: (65) 6835-3011/Fax: (65) 6835-2711

**OMRON (CHINA) CO., LTD.**

Room 2211, Bank of China Tower,  
200 Yin Cheng Zhong Road,  
PuDong New Area, Shanghai, 200120, China  
Tel: (86) 21-5037-2222/Fax: (86) 21-5037-2200

**Authorized Distributor:**

© OMRON Corporation 2021 All Rights Reserved.  
In the interest of product improvement,  
specifications are subject to change without notice.

CSM\_1\_1  
**Cat. No. Q340-E1-01**

Printed in Japan  
0621(0621)