

Try first,
don't just say I can't.
Try and find a way to do it.

Kazuma Tateisi
Omron's founder

We will exceed
your expectations

Yoshihito Yamada, President and CEO

For almost 90 years, we have worked with our customers to develop new and innovative products. With you and our dedicated, passionate and involved employees, we open the door to tomorrow, meeting the needs of people around the world.

OMRON

Listed in Forbes Top 2000 largest companies of the globe
Omron Corporation NASDAQ: OMRNY
Top ranking in Dow Jones Sustainability Index
Clarivate Analytics Top 100 2019 Global Innovator

► omron.me/omr_ir



Dow Jones
Sustainability Indexes
Member 2011/12

NASDAQ

Derwent
Top 100
Global
Innovator
2020

Clarivate
Analytics



1933

Kazuma Tateisi
established Omron



1972

Japan's first factory for workers
with disabilities set up



1974

Omron established in Europe



2006

Acquisition of the Safety
Products Group of STI



2015

Acquisition of the motion specialist
Delta Tau Data System



2015

Acquisition of Adept Technologies, leading
provider of intelligent robots, autonomous
mobile robot solutions and services



2017

Acquisition of Sentech, Leading
Industrial Camera Maker



2017

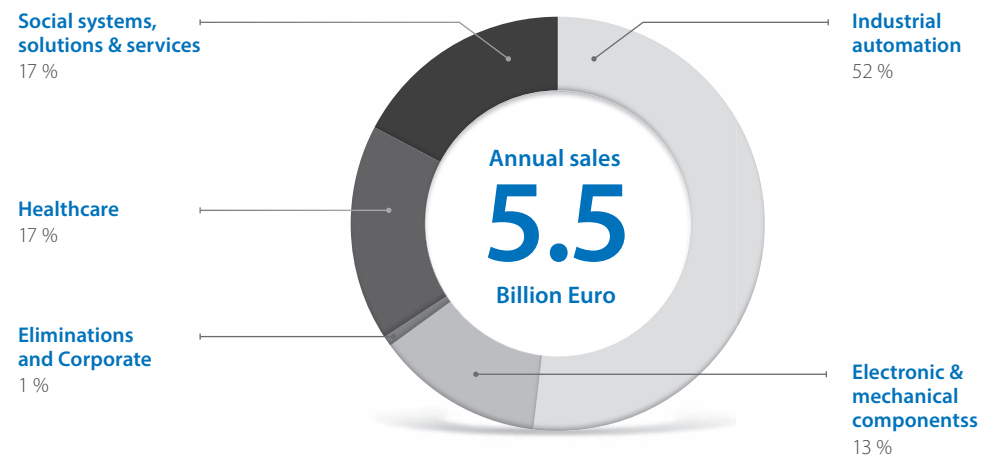
Acquisition of Microscan, global
supplier of industrial code readers

1933

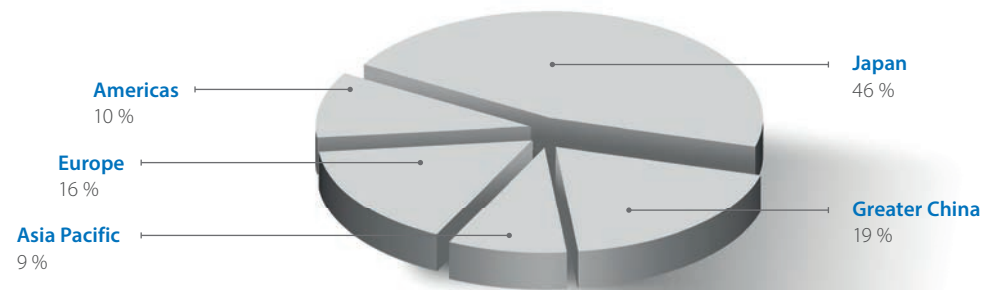
Nearly 90 years of experience in sensing & control.
Founded in Osaka, Japan in 1933

The facts

Omron's Businesses



Sales by geographical region



30,000

Employees worldwide

120

Countries worldwide

5.5

Billion Euro annual sales



Yoshihito Yamada

President and CEO

We have grown as a business

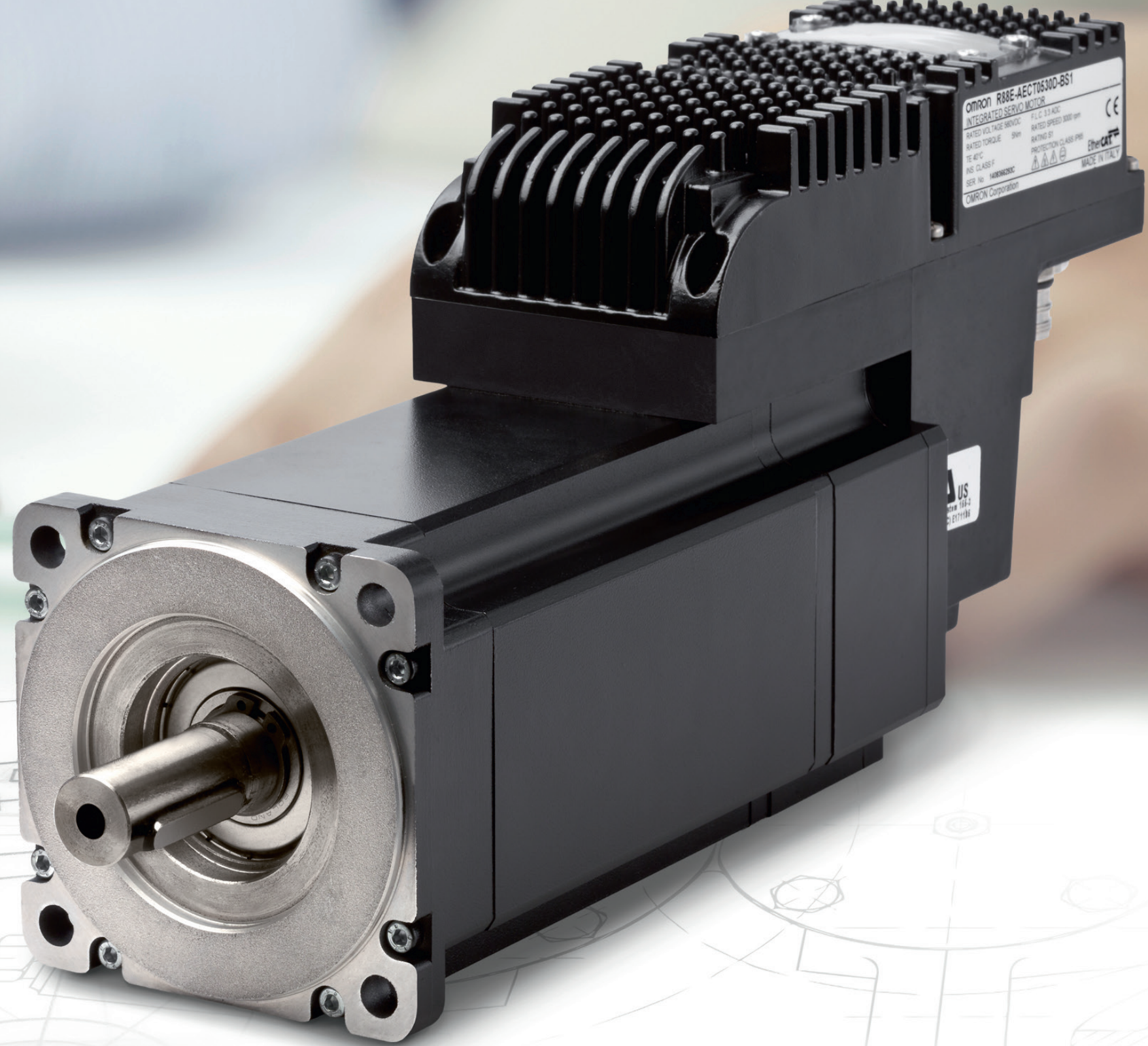
...by working with customers to develop new and innovative products. It's always been that way – our initial impetus for growth came when a friend of our founder suggested that he try to develop a high-speed timer for X-Ray photography. That cooperative spirit has become part of our company DNA. We listen to our peers and involve them in our product-development actions. It sets us apart from others and makes us – and our customers – much stronger. So demand – and expect – more from us. That way, we will continue to develop the products, systems and solutions that can help us create tomorrow's opportunities.



6.7%

Annual investment in research & development

Every year, we invest heavily in R&D, and even when market conditions are tough, we never back away from this commitment. Because it is only through innovation, and through continuing to push back the boundaries, that we will continue to create systems and devices that take the vital next step. The proof is in our outstanding track record of continuous innovation.





Innovation track record

1200 employees dedicated to R&D

10087 issued patents

1933 High-precision X-ray timer

Inspired by a friend, Omron founder Kazuma Tateisi developed a high-precision timer for X-ray photography.

1960 Solid-state proximity switch

In response to market demands, Omron created a contactless (solid-state) switch which far exceeded customer expectations.

1964 Automated traffic signal

Omron installed the world's first traffic-responsive electronic road signal in Tokyo to help ease congestion and prevent accidents.

1987 Ultra-high-speed fuzzy logic controller

Omron adopted fuzzy logic as a core technology, and in 1987 launched the fastest ever fuzzy controller.

2005 Face-recognition technology

Omron's unique sensing system inspired the face-recognition technology used on Apple and Samsung smartphones.

2011 Sysmac machine controller

One controller, one piece of software, and one machine network are integrated to enable next-generation machine automation.

2011 Sensing & Control + THINK

Technology to incorporate Human Intelligence into machines.

2017 Artificial intelligence

Development of a machine automation controller equipped with a machine learning artificial intelligence (AI) algorithm.



H

Human.
Working for the benefit of society

Contributing to a sustainable society by
weighing the economic, environmental,
and social impact of our actions.

1970

The Sinic Theory

First proposed by Omron's founder Kazuma Tateisi in 1970, SINIC theory defines how society, science and technology mutually impact and influence each other. Science enables new technology that helps society; while society's needs encourage both technological developments and scientific discovery. It's a dialogue that continues to this day, underpinning relationships between us and our customers, between engineers and end-users, machine-makers and consumers. It fires our imagination, and enables your creativity.



“To the machine, the work of the machine.
To man, the thrill of further creation.”

Kazuma Tateisi, founder of Omron

Creating the future of manufacturing

Bringing innovation
to manufacturing sites





Integrated automation

Achieving seamless technology
integration through advanced control



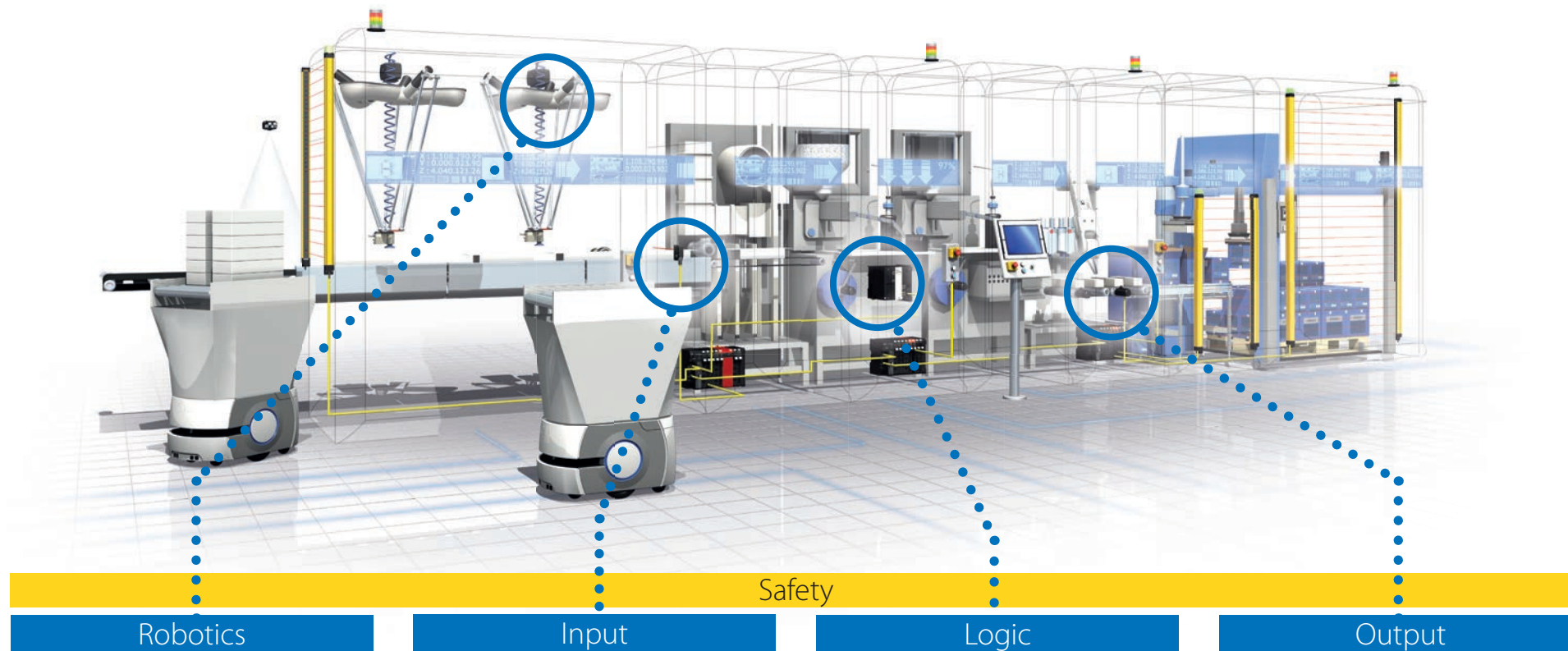
Intelligent automation

Turning factory floor data into high-value information



Interactive automation

Creating harmonious interaction between
humans and machines



Complete portfolio for machine automation

Integrated solutions for industrial and mobile and collaborative robots

We offer robotic automation solutions for applications from cutting-edge production facilities to manual operation processes by using our wide variety of control devices and integrating robotics into automation.

Collaborative and mobile robots give your company more flexibility by enabling you to quickly and cost-effectively adapt your production lines to new requirements and changing business needs. In addition to making your employees more efficient by allowing them to focus on tasks that require complex human skills, our mobile and collaborative robots increase throughput, reduce machine dwell time, eliminate errors and improve material traceability

Matchless application know-how

Sensing technology, from basic switches to advanced vision systems, detection, quality control and inspection through solid expertise in technology and proven application know-how.

Machine control and motion control are one

Our controllers, the core of any automation solution: control of sequencing, motion, temperature, networking, safety and vision, either dedicated or integrated in the Sysmac machine controller.

Fast, flexible, versatile and totally reliable

From relays to a high-accuracy servo drives, we transform your control system logic into action.

200,000 products delivering Input, Logic, Output, Safety and Robotics

Efficient Panel Engineering

New value for control panels

People: Simple & Easy for panel building

Easy wiring with Push-in Plus Technology, front-in and front-release wiring

Process: Innovating the panel building process

Efficient designing, swift customisation, faster wiring

Panels: An evolution for control panels

Space saving, reduce dead space, vibration resistance, improve airflow





Software

One Integrated Development Environment (IDE) software for configuration, programming, simulation and monitoring software.

Connectivity

Open networks: Profibus, DeviceNet, Profinet, CANopen, Comconet, Modbus, Mechatrolink II, Compobus/S, I/O link.



Lean

A true customer focused approach
to manufacturing



Low Cost Intelligent Automation

From 35 days to less than 5 days make-to-order

An average of 0.008 % defects

Employee productivity increase by 60 %



Customisation

**If our standard range of 200,000 products doesn't
meet your needs simply ask**

1-3 weeks for minor changes to existing products

6-10 weeks for customized products

Ad hoc projects for customer specific products



95 % of your demand delivered from stock

Everywhere in Europe within 2 days

Our engineers

...knowledgeable, experienced and above all involved. Every day, they make the difference. If you have a design challenge, they will find the answer; if you have a control issue, they will help you solve it; if you want to manufacture in a different country, they will connect you to our expert in this field.



“Our equipment and systems are an essential part of the total machine, they are vitally important. Visual inspection, motion control, process control, safety – these are what keeps production running, and ensures quality throughout the machine lifecycle. My job is to make sure that my customers get the best, every time.”

Ben van Boxtel, Engineer

365

days a year we develop
new and innovative machines with you



We make your bright ideas even brighter

Automation Technology Center, Barcelona

Talk to best-of-breed engineers, try out the latest applications, test your new ideas. Every year we organize more than 200 workshops.



Proof-of-concept design close to you

Experience the benefits of a connected, automated and intelligent factory.

Our 9 Proof-of-concept Labs throughout Europe offer automation support to local customers in local languages.



myOmron.com

Your international online community

Open to everyone in the industrial marketplace, 25,000 registered users, 2200 FAQs, 24h response time, support in your local language.



Benefits of a global network

Global
30,000 employees, 120 countries

Providing you with the support you need to operate globally

Global product availability

R&D based on worldwide requirements

Global support and services structure

Industrial Automation Europe
1700 employees, in 22 countries

Understanding local markets and requirements

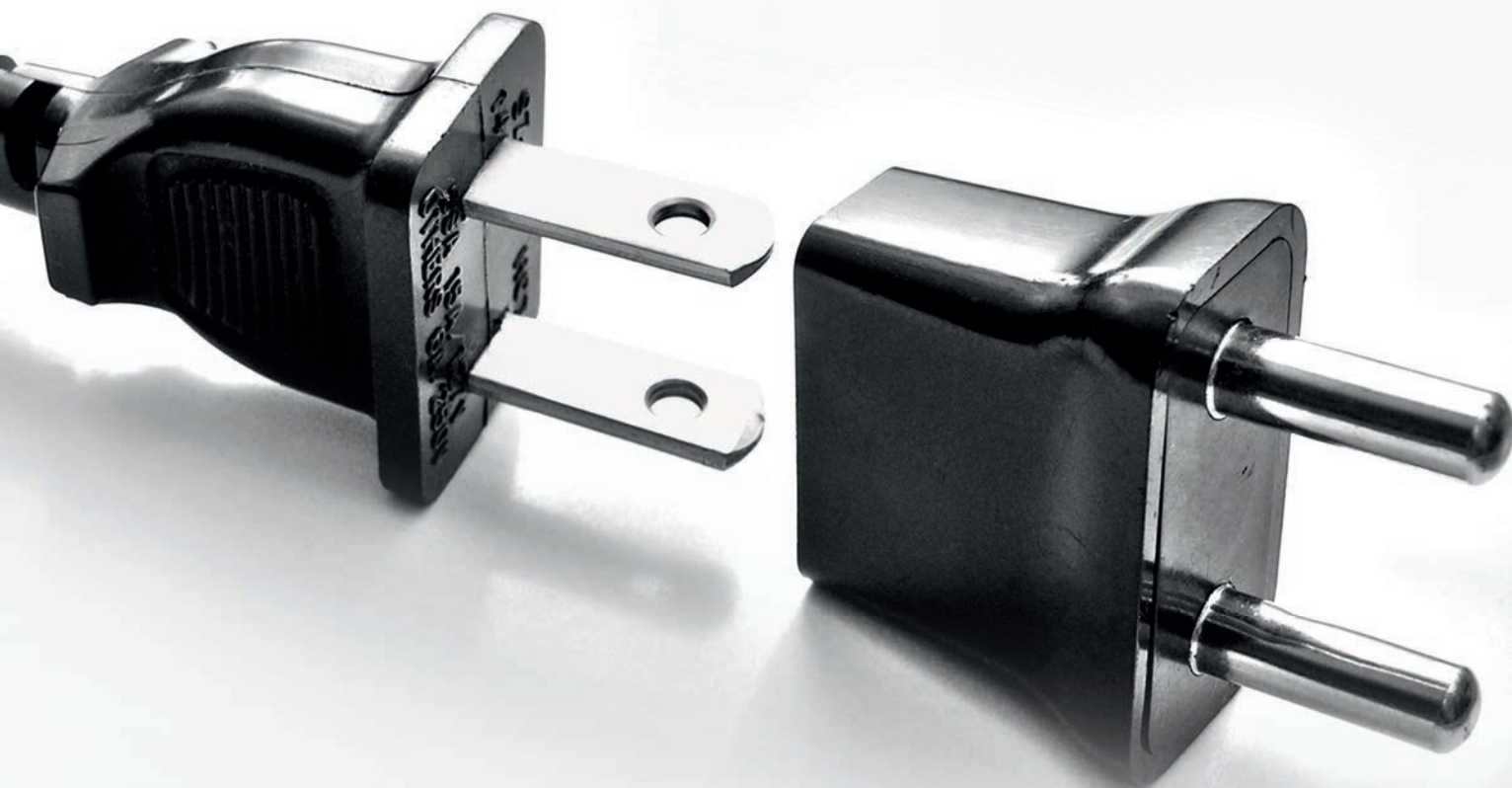
Adaptation of production for local needs

Logistic Structure

Manufacturing

Repair Center

Research & Development



Local support EMEA

800 technical specialists

39 sales support offices

We are close to your factories and customers with empowered engineers.
Global scale, local & market knowledge at your command anywhere.