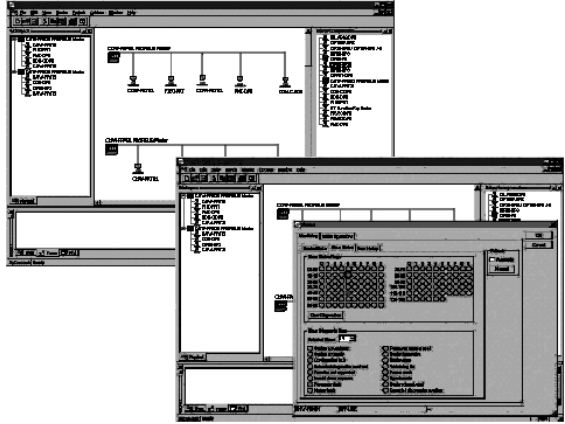


CX-PROFIBUS

# PROFIBUS configurator

**Advanced configuration tool that uses FDT/DTM (Field Device Tool and Device Type Manager) Technology**

- The PROFIBUS-DP network topology and system characteristics are defined and then downloaded in the OMRON PROFIBUS Master Unit
- Configuration can be done remotely, via other networks as Ethernet or ControllerLink
- Can be used with all Omron masters\*



**Function**

**The configuration software package for the OMRON PROFIBUS-DP master is used to define:**

- The configuration of the bus system connected.
  - Configuration- and parameter data of all connected slave stations.
  - Overall bus communication settings.
- All configuration data can be prepared off-line and downloaded remotely.

**After the initial configuration has been downloaded, the software package can be used for:**

- Addition / deletion of slave units or -modules.
- Monitoring the PROFIBUS system status.
- Troubleshooting communication problems.

It is not possible to use other (general-purpose) PROFIBUS-DP Configurator software packages for this purpose

**More about FDT/DTM and Omron CX-PROFIBUS**

FDT is a frame application that provides a standard communication interface between software components that support the field devices and systems. These so-called DTMs, can be used in all configuration tools who follow the FDT specification.

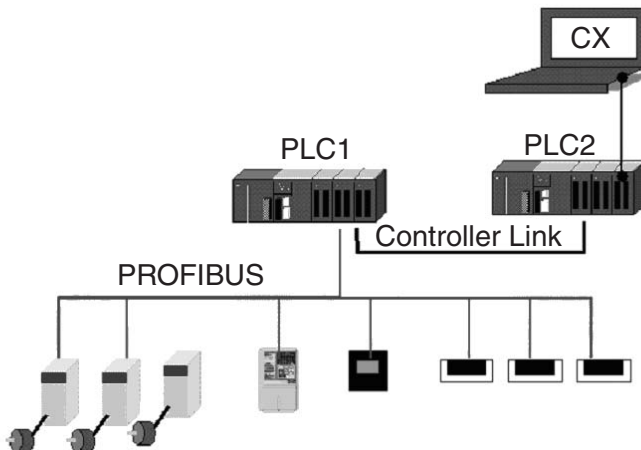
The DTM is the management component for a field device or system. It provides all configuration, diagnostics and maintenance information and even graphical user dialogs of the specific device. Omron's CX-PROFIBUS configuration package is a FDT frame application that includes all DTM's for Omron PROFIBUS masters and slaves. DTM's of other vendors devices can be added. Also a Generic slave DTM for field devices that only provide a GSD-file for configuration is available.

**Ordering Information**

Name	Model
CX-PROFIBUS	CX-Profi

C200HW-PRM21 will be supported early 2004. Remote configuration is not possible with the C200H master.

**System Configuration**



Cat. No. P03E-EN-01

**In the interest of product improvement, specifications are subject to change without notice.**

---

**OMRON EUROPE B.V.**

Wegalaan 67-69,  
NL-2132 JD, Hoofddorf,  
The Netherlands  
Phone: +31 23 568 13 00  
Fax: +31 23 568 13 88  
[www.eu.omron.com](http://www.eu.omron.com)

---