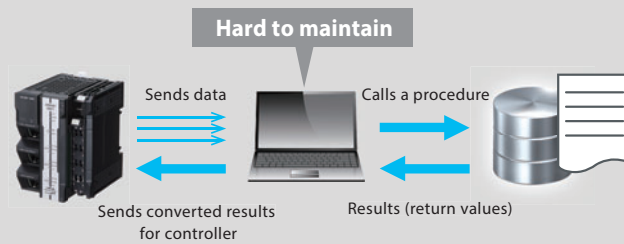


Quality gate for each process

Problem

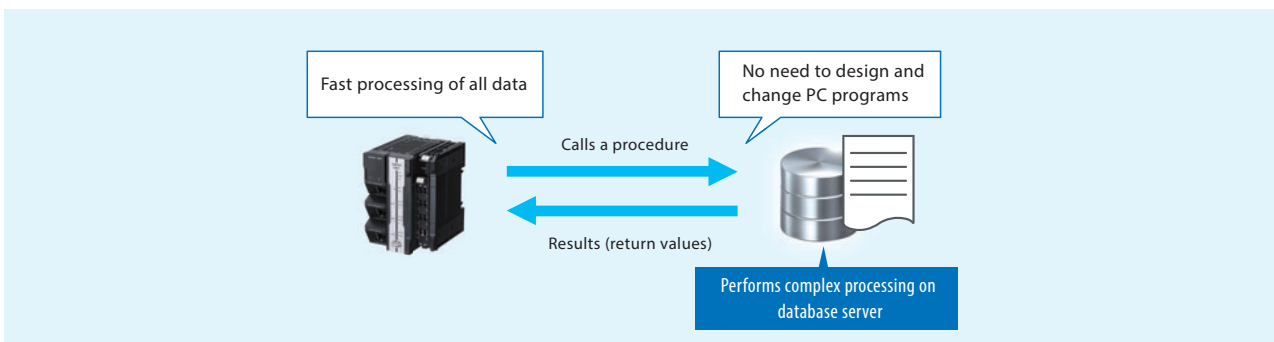
In order to produce traceable products, a gateway computer, which performs complex processing to check data after each process, is used between the controller and database. Programming and maintenance of software require significant time and effort.



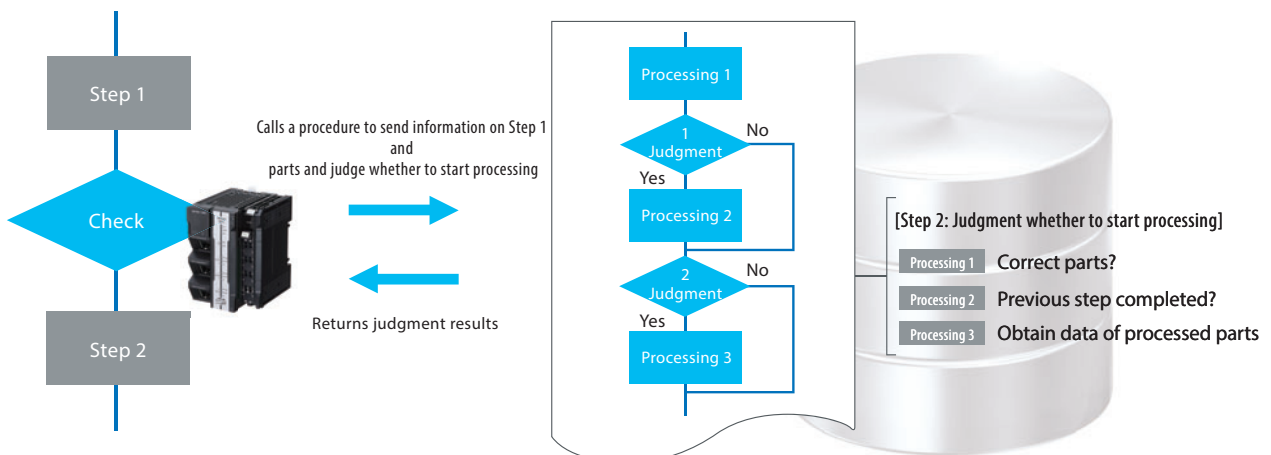
Database direct connection CPU unit version 2.0 offers solution!

Call stored procedures on database without PC

Stored Procedure Call to call a stored procedure in a database from the controller has been added to version 2.0. This function performs complex processing, eliminating the need for a PC that requires time-consuming design and maintenance.



Usage example: Data check before process



What is Stored Procedure?


Stored Procedure is one of the database functions.

A group of SQL statements is stored in a database, enabling complex processing to be executed with one call. Stored Procedure Call to call a stored procedure in a database from the controller has been added to version 2.0. Complex arithmetic processing can be performed on the database, simplifying programming for controllers, reducing processing time, and ensuring data consistency on the database.


Ordering Information

Database Connection CPU Units

NX701 CPU Unit

Product name	Specifications			Power consumption	Model
	Program capacity	Memory capacity for variables	Number of motion axes		
	80MB	4 MB: Retained during power interruption	256	40 W (including SD Memory Card and End Cover)	NX701-1720
		256 MB: Not retained during power interruption	128		NX701-1620

NX102 CPU Unit

Product name	Specifications				Model	
	Program capacity	Memory capacity for variables	Maximum number of used real axes			
				Number of motion axes	Single-axis position control axes	
	5MB	1.5 MB: Retained during power interruption 32 MB: Not retained during power interruption	12	8	4	NX102-1220
			8	4	4	NX102-1120
			6	2	4	NX102-1020
			4	0	4	NX102-9020

Note: Databases supported by version 2.0: Microsoft SQL server, Oracle Database, MySQL, and PostgreSQL.

Microsoft and SQL Server are either registered trademarks or trademarks of Microsoft Corporation in the United States and/or other countries.

Oracle, Oracle Database, and MySQL are trademarks or registered trademarks of Oracle Corporation and/or its affiliates in the United States and other countries.

Other company names and product names in this document are the trademarks or registered trademarks of their respective companies.

Note: Do not use this document to operate the Unit.

OMRON Corporation Industrial Automation Company
Kyoto, JAPAN

Contact: www.ia.omron.com

Regional Headquarters

OMRON EUROPE B.V.
Wegalaan 67-69, 2132 JD Hoofddorp
The Netherlands
Tel: (31)2356-81-300/Fax: (31)2356-81-388

OMRON ASIA PACIFIC PTE. LTD.
No. 438A Alexandra Road # 05-05/08 (Lobby 2),
Alexandra Technopark,
Singapore 119967
Tel: (65) 6835-3011/Fax: (65) 6835-2711

OMRON ELECTRONICS LLC
2895 Greenspoint Parkway, Suite 200
Hoffman Estates, IL 60169 U.S.A.
Tel: (1) 847-843-7900/Fax: (1) 847-843-7787

OMRON (CHINA) CO., LTD.
Room 2211, Bank of China Tower,
200 Yin Cheng Zhong Road,
PuDong New Area, Shanghai, 200120, China
Tel: (86) 21-5037-2222/Fax: (86) 21-5037-2200

Authorized Distributor:

© OMRON Corporation 2019 All Rights Reserved.
In the interest of product improvement,
specifications are subject to change without notice.

Cat. No. P149-E1-01

Printed in Japan
0819 (0819)