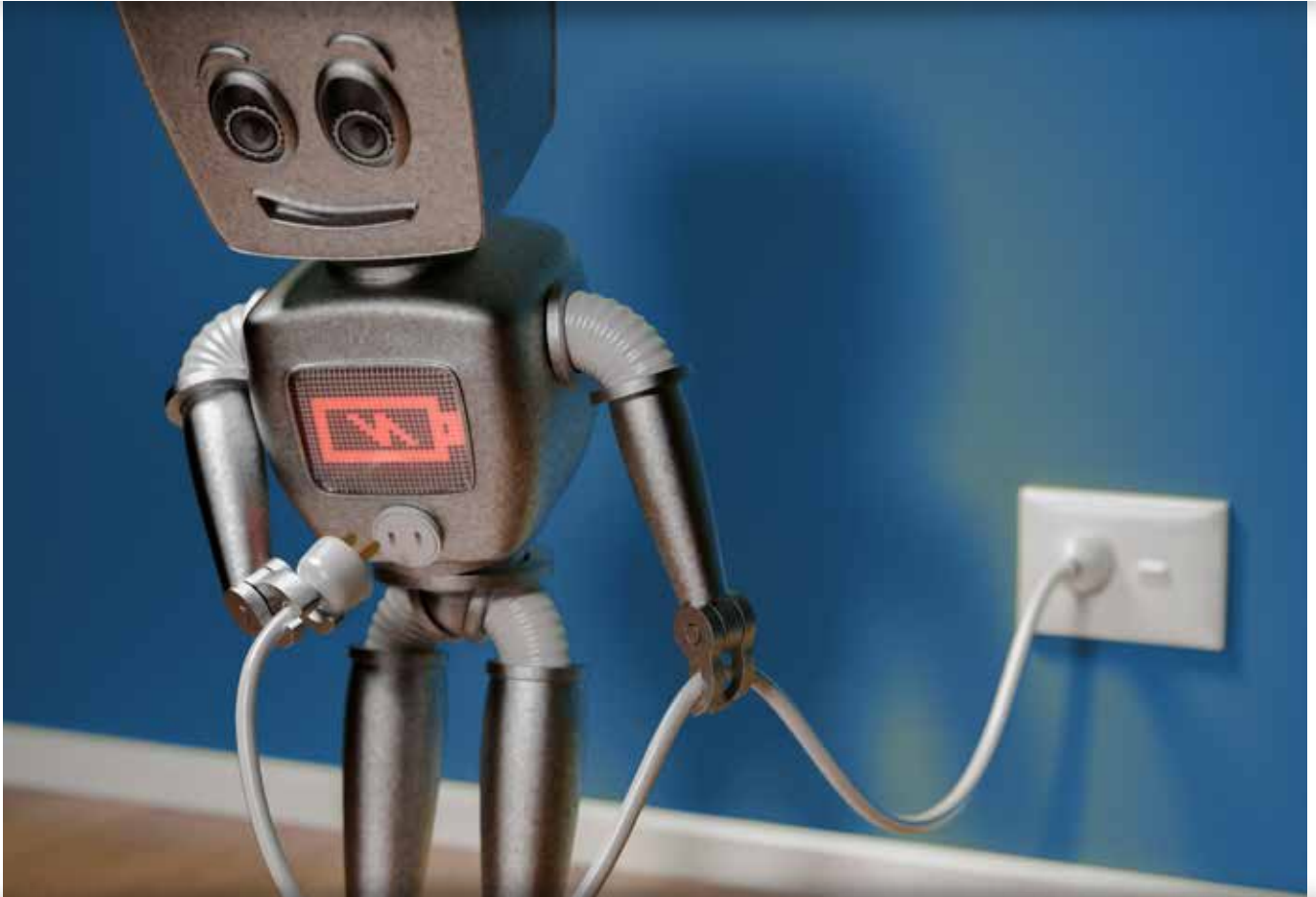


Power interruption: safe robot shutdown

Uninterruptable Power Supplies (UPS) BU_2RW/2SW and S8BA



Power interruptions on robot lines are expensive

They cause:

- Incomplete cycles: valuable half-finished product is wasted
- Lost traceability data: also means valuable half-finished product is wasted. Even worse, defective products may enter the market and need recalling

We offer a proven solution!

With our Robots and Uninterruptable Power Supplies (UPS)

When power goes down, a stable secondary power supply (UPS) enables a robot system to finish the cycle before shutting down the system safely. The UPS also means that all data remains live and can be safely backed up.

Hence, our promises:

"Assured continuity of cycle time"

"Never lose data"

Would you like to know more?

+31 (0) 23 568 13 00

industrial.omron.eu/contact

UPS for Adept Robots

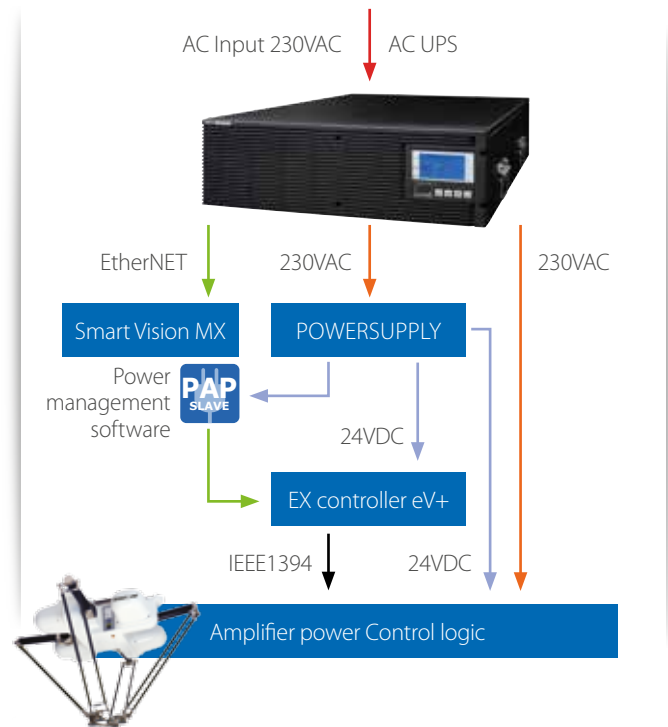
BU_2RW/2SW - AC power line

Maintaining the continuity of cycles protects valuable halffinished products. When power goes down, the products can still be finished.

BU_2RW/2SW

New Online AC UPS with IoT for industrial use. Useful in a variety of applications for IPC, Vision and Robotics automation.

- back up line: AC power line(Including DC line)
- Complete system
- For robots Hornet 565, Quattro 650/800, Cobra 350, eCobra 600/800, eCobra 800 Inverted, Viper 650/850



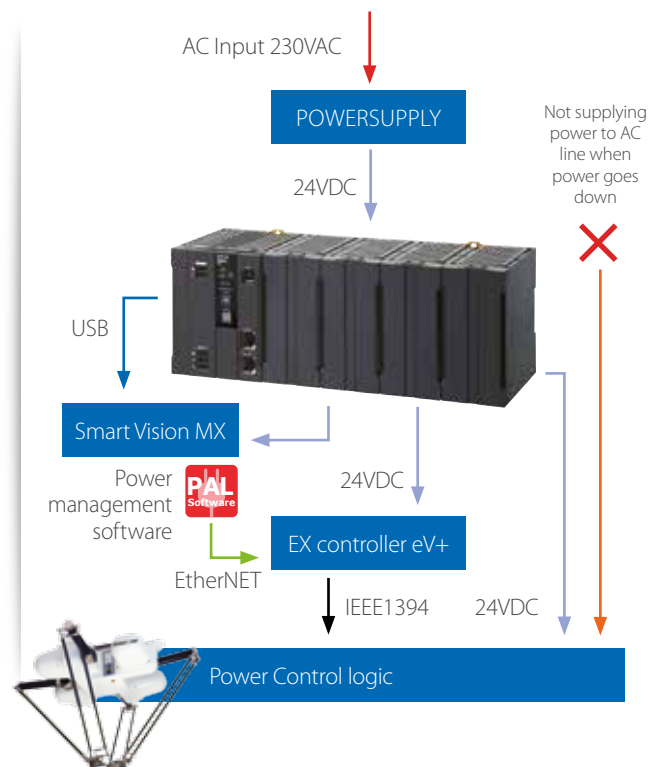
S8BA - DC power line

Saving data and shutting down vision system based on Windows O.S. ensures traceability is protected. When power goes down, data is maintained by UPS.

S8BA

Compact DC-DC UPS with DIN-rail mounting, best suited for the prevention of voltage drop and power failure in IPC/controllers

- back up line: DC power line
- Only for control/logic line
- For robots Hornet 565, Quattro 650/800, Cobra 350, eCobra 600/800, eCobra 800 Inverted, Viper 650/850



Would you like to know more?

+31 (0) 23 568 13 00

industrial.omron.eu/contact