

NEW

PCB Inspection System VT-S530

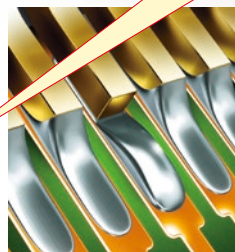
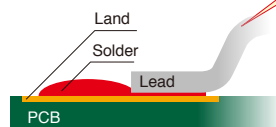
Featuring High Productivity and High Resolution

Introducing a New Model
in the VT-S Full-3D Inspection Series!

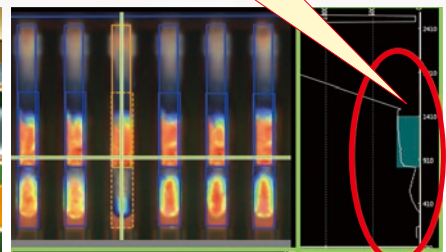


High-precision Soldering Inspection In common with VT-S730

The VT-S7 series features full-3D inspection based on high-accuracy solder shape restoration. Accurate quantitative inspection of solder bondability is now possible, greatly contributing to quality control requirements conforming to international standards such as IATF (ISO/TS)16949.



■ Solder bondability inspection image (non-wetting of lead)

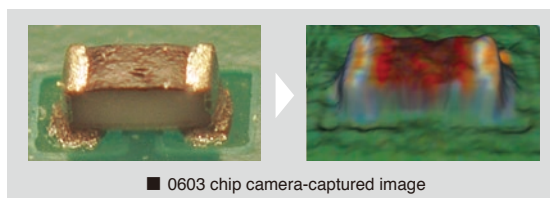


■ Inspection screen

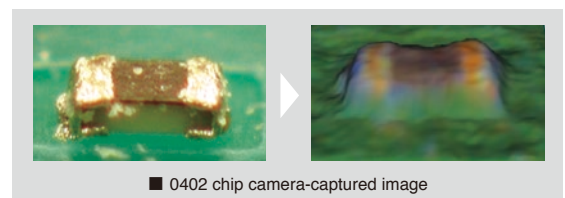
SJI using high-precision shape restoration can detect "non-wetting" which is difficult to detect with ordinary inspection systems!

High-resolution inspection

With engineering specifications and high resolution compatible with the SEMI industry, the VT-S530 provides stable inspection of 0402/0603 microchip components!



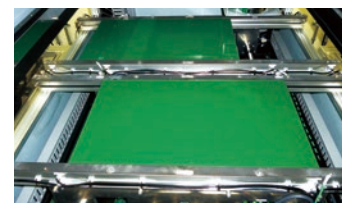
■ 0603 chip camera-captured image



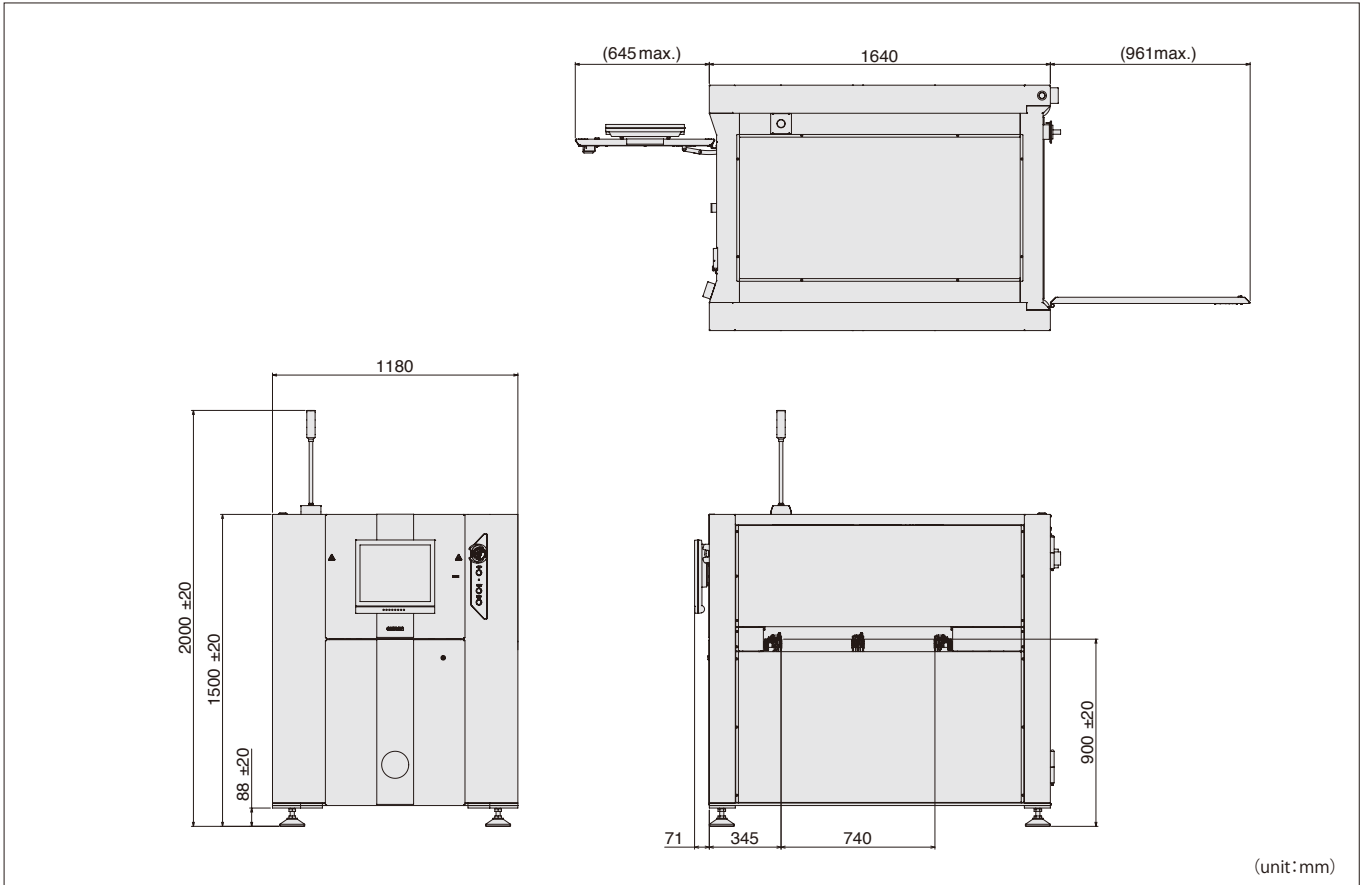
■ 0402 chip camera-captured image

High-productivity Inspection

The VT-S530 supports dual lane operation for higher production throughput. Dual lane operation using various PCBs is possible, due to its handling capability up to the PCB size of 510 (W) x 330 (D) mm.



Dimensions



Hardware configuration

| | |
|---------------------|--|
| Outer dimensions | 1180(W) × 1640(D) × 1500(H)mm |
| Weight | 850kg |
| Power supply | 200 to 240 VAC (single phase), voltage fluctuation range ±10% |
| Line height | 900±20mm |
| Air supply pressure | 0.3 ~ 0.6MPa |

Functional specifications

| | |
|--------------------------|---------------------------------------|
| Minimum PCB size | 50(W) × 50(D)mm |
| Maximum PCB size | Dual operation : 510(W) × 330(D) mm |
| | Single operation : 510(W) × 680(D) mm |
| Thickness | 0.4 ~ 4mm |
| Clearance | Above PCB : 50mm ; Below PCB : 50mm |
| Height measurement range | 25mm |

- This document provides information mainly for selecting suitable models. Please read the Instruction Sheet carefully for information that the user must understand and accept before purchase, including information on warranty, limitations of liability, and precautions.
- This product may cause interference if used in residential areas.

OMRON Corporation

INDUSTRIAL AUTOMATION COMPANY INSPECTION SYSTEMS BUSINESS DIVISION SALES DEPARTMENT

Shinagawa Front Bldg. Conference 7F
2-3-13 Kounan Minato-ku Tokyo
108-0075 JAPAN
TEL +81-3-6718-3550 FAX:+81-3-6718-3553

OMRON INDUSTRIAL AUTOMATION (CHINA) CO., LTD.

F20,TowerA,NEO Building,6011ShennanAvenue,
Futian District, Shenzhen, Guangdong
518048, China
TEL: +86-755-8359-9028 FAX: +86-755-8359-9628

Omron AOI Business Europe, Omron Europe B.V.

Zilverenberg 2, 5234 GM 's-Hertogenbosch, The Netherlands
TEL:+31 (0)736-481811 FAX: +31 (0)736-481879

OMRON ELECTRONICS LLC

2895 Greenspoint Parkway, Suite 200
Hoffman Estates, IL 60169 U.S.A
TEL:+1-847-843-7900 FAX:+1-847-843-7787

OMRON ELECTRONICS KOREA CO.,LTD.

21F, KyoboTower B Wing, 465, Gangnam-daero,
Seocho-gu, Seoul, Korea 137-920
TEL: +82-2-3483-7789 FAX: +82-2-3483-7788

OMRON ASIA PACIFIC PTE LTD

438A Alexandra Road #05-05/08 (Lobby 2)
Alexandra Technopark Singapore 119967
TEL:+65-6835-3011 FAX:+65-6835-2711

Authorized Distributor: